



## **Phylogenetic Relationships of Eublepharid Geckos (Reptilia: Squamata): A Molecular Approach**

Authors: Ota, Hidetoshi, Honda, Masanao, Kobayashi, Mari, Sengoku, Showichi, and Hikida, Tsutomu

Source: Zoological Science, 16(4) : 659-666

Published By: Zoological Society of Japan

URL: <https://doi.org/10.2108/zsj.16.659>

---

BioOne Complete ([complete.BioOne.org](https://complete.BioOne.org)) is a full-text database of 200 subscribed and open-access titles in the biological, ecological, and environmental sciences published by nonprofit societies, associations, museums, institutions, and presses.

Your use of this PDF, the BioOne Complete website, and all posted and associated content indicates your acceptance of BioOne's Terms of Use, available at [www.bioone.org/terms-of-use](https://www.bioone.org/terms-of-use).

Usage of BioOne Complete content is strictly limited to personal, educational, and non - commercial use. Commercial inquiries or rights and permissions requests should be directed to the individual publisher as copyright holder.

---

BioOne sees sustainable scholarly publishing as an inherently collaborative enterprise connecting authors, nonprofit publishers, academic institutions, research libraries, and research funders in the common goal of maximizing access to critical research.

# Phylogenetic Relationships of Eublepharid Geckos (Reptilia: Squamata): A Molecular Approach

Hidetoshi Ota<sup>1\*</sup>, Masanao Honda<sup>2</sup>, Mari Kobayashi<sup>2</sup>, Showichi Sengoku<sup>3</sup>,  
and Tsutomu Hikida<sup>2</sup>

<sup>1</sup>Tropical Biosphere Research Center, University of the Ryukyus, Nishihara,  
Okinawa 903-0213, Japan,

<sup>2</sup>Department of Zoology, Graduate School of Science, Kyoto University, Sakyo-ku,  
Kyoto 606-8502, Japan and

<sup>3</sup>Japan Wildlife Research Center, Yushima 2-29-3, Bunkyo-ku,  
Tokyo 113-0034, Japan

**ABSTRACT**—Phylogenetic analyses were carried out for representatives of all eublepharid genera and a few other gekkonoid taxa using sequence data for 879 base pairs of mitochondrial 12S and 16S ribosomal RNA genes. Neighbor-joining (NJ) distance analysis of the data suggested independent great divergences of *Coleonyx* and *Aeluroscalabotes*, and monophyly of the remainder within Eublepharidae (bootstrap proportion [BP]=76%). Of the latter, the two African genera, *Hemitheconyx* and *Holodactylus*, were almost certainly monophyletic altogether (BP=99%), whereas their sister-group relationship with *Eublepharis* received a weaker, but still substantial support (BP=68%). Within *Goniurosaurus kuroiwae*, *G. k. splendens* first diverged from the remainder (BP=100%), followed by *G. k. kuroiwae* from the northern part of Okinawajima (BP=100%); *G. k. kuroiwae* from the southern part of Okinawajima and *G. k. orientalis*, differing from each other at only seven bases, diverged finally (BP=99%). Parsimony analysis yielded results consistent with those of NJ analysis with respect to the monophyly of the two African genera and relationships within *G. kuroiwae*, but retained the other relationships within Eublepharidae unresolved. Our results, while showing no serious discrepancies with the relationships among eublepharid genera hypothesized from morphological data, cast a serious doubt to the currently accepted population systematics within *G. kuroiwae*. Furthermore, results of both analyses suggested a closer affinity of Diplodactylinae (as represented by *Rhacodactylus trachyrhynchus*) with Eublepharidae, rather than with Gekkoninae. Our study lends a robust support to the Laurasian origin of the family Eublepharidae.

## INTRODUCTION

Kluge (1987), based on the cladistic analysis of morphological characters, recognized “eyelid geckos” classified to the subfamily Eublepharinae of the family Gekkonidae to that date (Kluge, 1967), as constituting a single primitive lineage distant from all other members of the microorder Gekkota (Fig. 1). He thus revalidated family Eublepharidae Boulenger, 1883, to accommodate all eyelid geckos that sporadically occur in Eurasia, Africa and North America.

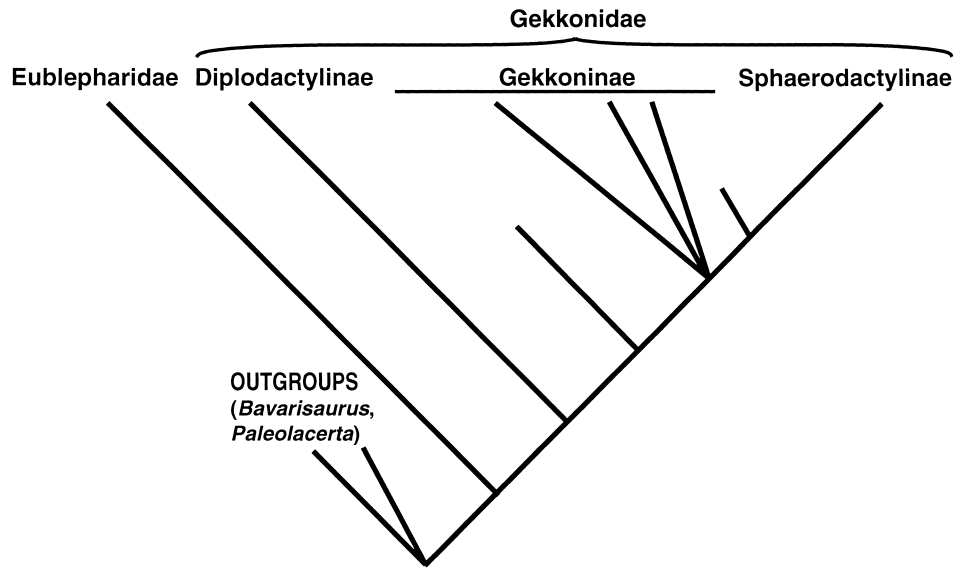
Also on the basis of the cladistic analysis of morphological characters, Grismer (1988), while confirming the monophyly of the eublepharid geckos, formulated a detailed, comprehensive phylogenetic hypothesis for the family (Fig. 2) and revised the infrafamilial classification accordingly. Through this

and two subsequent taxonomic works (Grismer, 1989, 1991), 18 species belonging to six genera of two subfamilies have been recognized for the family Eublepharidae.

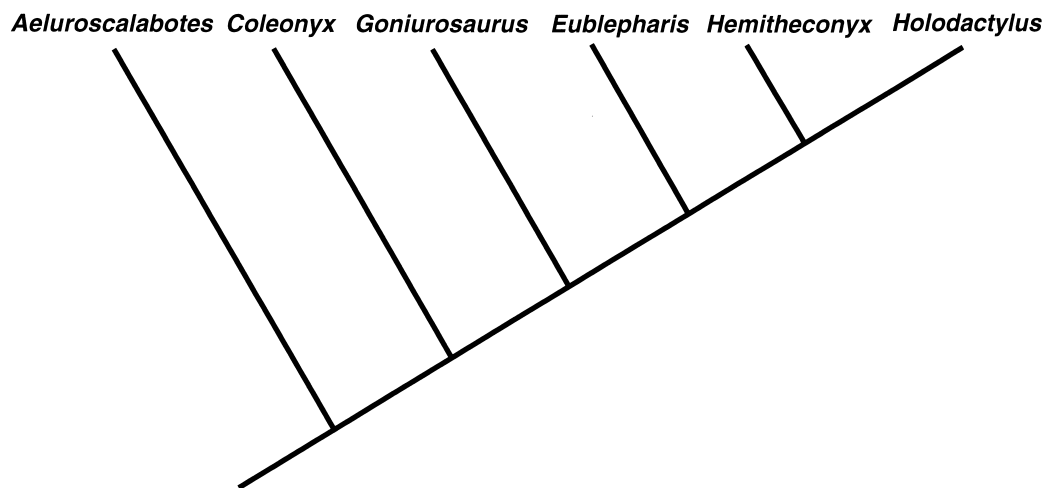
A few other studies demonstrated considerable chromosomal and eco-physiological variations among some eublepharid geckos (e.g., Murphy, 1974; Ota *et al.*, 1987; Dial and Grismer, 1992), and these predict the effectiveness of approaches other than the external and anatomical analyses to the eublepharid phylogeny. For the improvement of a given phylogenetic hypothesis formulated on the basis of a certain set of characters, testing by using a different character set would be highly effective. Nevertheless, no approaches other than the above-mentioned morphological ones have ever been attempted toward the comprehensive phylogeny of this family or its relationship with other gekkotan groups.

We partially sequenced mitochondrial DNA (mtDNA) for representatives of all eublepharid genera and a few of other major groups of Gekkota (subfamilies Gekkoninae and Diplodactylinae of the family Gekkonidae), and analysed

\* Corresponding author: Tel. +81-98-895-8937;  
FAX. +81-98-895-8576.  
E-mail: ota@sci.u-ryukyu.ac.jp



**Fig. 1.** Cladistic relationships of the major groups of Gekkota (exclusive of Pygopodidae) hypothesized by Kluge (1987). He also argued for (and depicted) the sister-group relationship of Pygopodidae with Diplodactylinae, but this account is not fully accepted (e.g., Estes *et al.*, 1988).



**Fig. 2.** Cladistic relationships of the eublepharid genera hypothesized by Grismer (1988).

resultant sequences phylogenetically. In this paper, we compare our results with results of morphological analyses by previous authors, and discuss their systematic and biogeographical implications.

## MATERIALS AND METHODS

A total of 17 specimens (three subspecies and seven species) representing all of the six eublepharid genera were used. Of these, six specimens of *Goniurosaurus kuroi* and two specimens of *Aeluroscalabotes felinus* were sampled in the field. The other specimens were obtained from pet dealers in life or in fresh dead state. These included two obviously conspecific eublepharid specimens of unknown origins that showed morphological features characteristic of *Goniurosaurus* (as defined by Grismer [1988]), but were distinct from either of the two known species of the genus (i.e., *G. kuroi* and *G. lichtenfelderi*; Grismer, 1988) (Fig. 3). We henceforth refer to



**Fig. 3.** Apparently undescribed species of *Goniurosaurus* used in this study.

these specimens as *G. sp.* One diplodactyline (*Rhacodactylus trachyrhynchus*) and two gekkonine geckos (*Gekko gecko* and *Cyrtodactylus intermedius*) of the family Gekkonidae were also subjected to this study. As outgroups, two scincids (*Eumeces latiscutatus* and *Lygosoma bowringii*) and one iguanid species (*Iguana iguana*) were chosen as representatives of Autarchoglossa (an extant sister-group of Gekkota) and a more basal lineage (Estes *et al.*, 1988), respectively. Voucher specimens are deposited in the Department of Zoology, Kyoto University (KUZ: see Appendix-1).

Livers, removed from anesthetized or dead specimens and stocked at  $-80^{\circ}\text{C}$ , were used for DNA extraction. Each sample was processed for sequencing of 12S and 16S ribosomal RNA (rRNA) genes of mitochondrial DNA (mtDNA) following the method by Wada *et al.* (1992) as modified by Honda *et al.* (1999). These genes, functionally important and thus are supposedly fairly conservative, are expected to be informative for divergence back to about 300 million years ago (MYA) at maximum (Mindell and Honeycutt, 1990). Thus, sequence variation in these genes seems to be suitable for the phylogenetic reconstruction of extant Gekkota, which divergence is considered to have initiated some 180 MYA (Kluge, 1987).

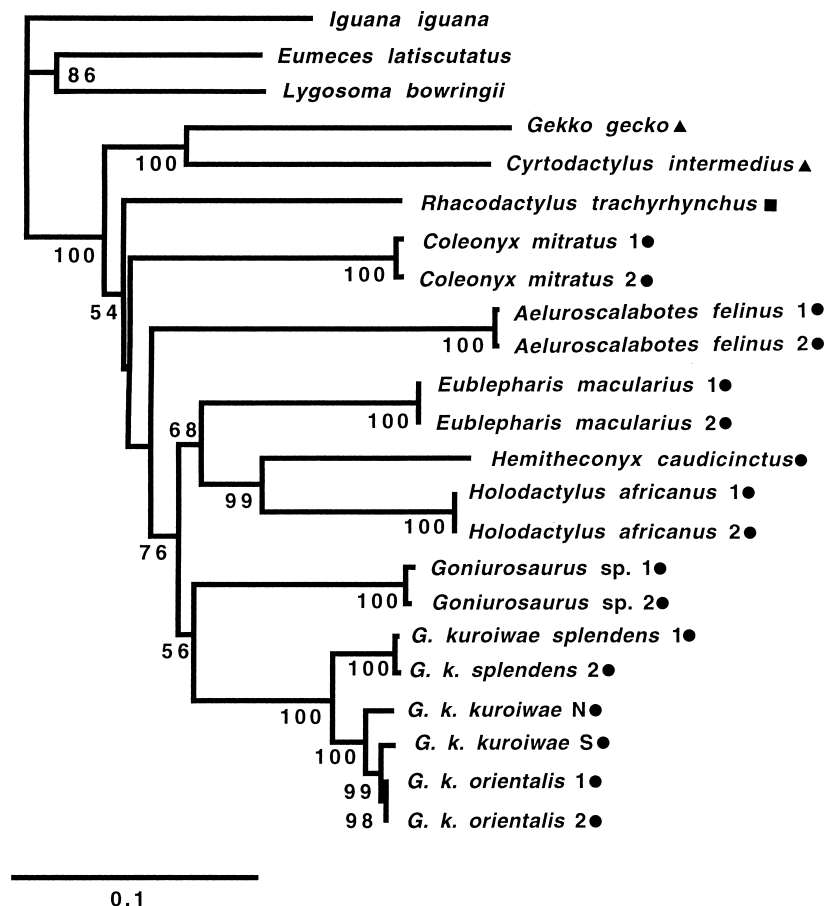
Alignments for DNA sequences were determined based on maximum nucleotide similarity. Using the aligned sequences, we eliminated gap sites and prepared a pairwise matrix of distance by Kimura's (1980) two-parameter model for transition/transversion bias. The

matrix was then subjected to the analysis by the neighbor-joining (NJ) method (Saitou and Nei, 1987) using Clustal W (Thompson *et al.*, 1994). Degrees of supports for internal branches of each tree were assessed by 1,000 bootstrap pseudoreplications (Felsenstein, 1985). Parsimony analysis was also performed using the Heuristic algorithm of PAUP (version 3.11: Swofford, 1993). In this analysis, each nucleotide base was regarded as a character and four kinds of salts as different character states. The result of this analysis was expressed as a 50% majority-rule consensus tree. In both analyses, each specimen was set as constituting a single OTU by itself.

The interpretation of bootstrap proportions (BPs) is still controversial (e.g., Felsenstein and Kishino, 1993; Hillis and Bull, 1993). We tentatively postulated BPs  $\geq 90\%$  as strong support,  $70 \leq \text{BPs} < 90\%$  as moderate support,  $50 \leq \text{BPs} < 70\%$  as constituting limited evidence of monophyly, and BPs  $< 50\%$  as insufficient support for monophyly, following Shaffer *et al.* (1997).

## RESULTS

Aligned sequences from two mtDNA genes are presented in Appendix-2. The 12S rRNA fragment consisted of 406 total aligned sites, of which 253 (62.3%) were variable. For the



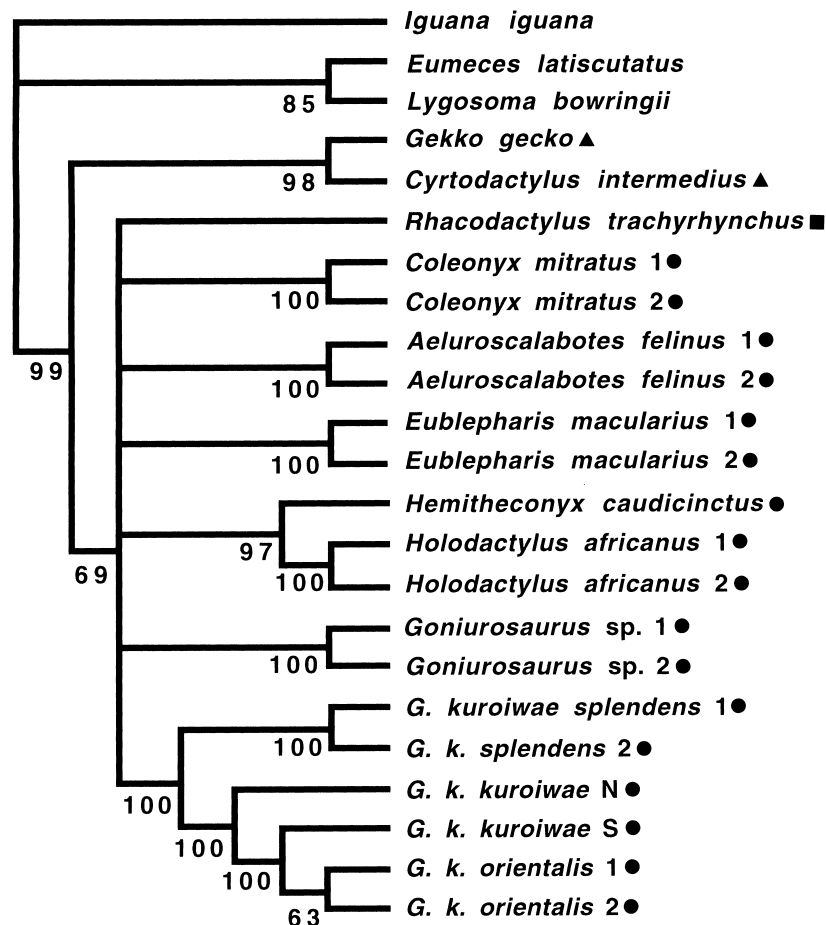
**Fig. 4.** NJ dendrogram deriving from Kimura's (1980) distance matrix from 12S and 16S rRNA sequence data. Numbers at branches indicate bootstrap proportions in 1,000 bootstrap pseudoreplications. Of the ingroup taxa, those belonging to the family Eublepharidae, and subfamilies Gekkoninae and Diplodactylinae of the family Gekkonidae are denoted by circles, triangles and a rectangle, respectively. N and S following *G. k. kuroiwae* indicate that those specimens were from the northern and the southern parts of Okinawajima, respectively (see Appendix-1 for further details). For each of other species/subspecies, different individuals, when examined, are discriminated by arabic numerals (1, 2). Scale bar equals 0.1 of the distance.

16S rRNA fragment, there were 473 total sites, of which 259 (54.8%) were variable. Nucleotide replacements of the eublepharids with a diplodactyline and gekkonines varied from 174 base pairs (bp) (*Holodactylus africanus* vs *Rhacodactylus trachyrhynchus*) to 200 bp (*Goniurosaurus* sp. vs *R. trachyrhynchus*), and from 202 bp (*H. africanus* vs *Cyrtodactylus intermedius*) to 236 bp (*G. kuroiwaie kuroiwaie* vs *Gekko gecko*), respectively, whereas those between the latter two groups were from 197 bp (*C. intermedius* vs *G. gecko*) to 239 bp (*R. trachyrhynchus* vs *G. gecko*). Within Eublepharidae, the intergeneric and intrageneric replacements ranged from 137 bp (*Hemitheconyx caudicinctus* vs *Holodactylus africanus*) to 200 bp (*Aeluroscalabotes felinus* vs *H. africanus*), and from 7 bp (*G. k. kuroiwaie* vs *G. k. orientalis*) to 159 bp (*G. k. kuroiwaie* vs *G. sp.*), respectively.

Fig. 4 shows the NJ dendrogram derived from the OTU-distance matrix. In this analysis, no sufficient supports were obtained for the monophyly of the Eublepharidae, because of the inclusion of *R. trachyrhynchus* (Diplodactylinae of Gekkonidae) to the otherwise eublepharid cluster. Within Eublepharidae, *Coleonyx* and *Aeluroscalabotes* showed great, independent divergences, whereas the others appeared monophyletic (BP=76%). Sister-group relationships of the two Afri-

can genera (*Hemitheconyx* and *Holodactylus*) of the latter was strongly supported (BP=98%), whereas their sister-group relationships with *Eublepharis* received a weaker support (BP=68%). On the other hand, monophyly of *Goniurosaurus* was even more weakly supported (BP=56%). All conspecific/conspecific combinations received 98–100% BP supports. Of *G. kuroiwaie* subspecies/populations examined here, *G. k. splendens* first diverged, and then did *G. k. kuroiwaie* from the northern part of Okinawajima: *G. k. kuroiwaie* from the southern part of Okinawajima and *G. k. orientalis* constituted a minimum monophyletic unit with high BP value (99%).

Results of the parsimony analysis showed no apparent inconsistency with the relationships suggested by the NJ dendrogram. As are depicted in Fig. 5, relationships resulting from this analysis weakly but still substantially supported the closer diplodactyline affinity to eublepharids than to gekkonines (BP = 64%), and strongly supported the monophyly of African eublepharids (97%), greatest divergence of *G. k. splendens* among the conspecifics, and closer affinity of *G. k. kuroiwaie* from southern Okinawajima to *G. k. orientalis* than to *G. k. kuroiwaie* from northern Okinawajima (BP=100% for both).



**Fig. 5.** The majority-rule consensus tree deriving from parsimony analysis using nucleotide bases of 12S and 16S rRNA genes as characters and the four kinds of salts as different character states. See Fig. 4 for explanations of denotations.

## DISCUSSION

As far as the intergeneric phylogeny within Eublepharidae is concerned, results of the present analyses showed no serious contradictions with the previous hypothesis formulated on the basis of a cladistic analysis of morphological data (Grismer, 1988) (Fig. 2). Our results, nevertheless, did not support the initial, most fundamental divergence of *Aeluroscalabotes* from the remaining eublepharids, which let Grismer (1988) establish the monotypic subfamily Aeluroscalabotinae against Eublepharinae. Further, more comprehensive analysis is needed to verify the validity of these subfamilies from the phylogenetic view point.

The relatively poor support for the closest affinity between the two *Goniurosaurus* species examined may be attributable to their relatively long isolation as is also implied by the highly relict distribution of the genus (Ota, 1998). This *ad hoc* assumption needs verifications by incorporating data for the other *Goniurosaurus* species, *G. lichtenfelderi*, into future analyses.

The relationship among populations of *G. kuroiwae* did not agree with their assignments to morphologically defined subspecies (Grismer *et al.*, 1994), because it strongly suggests the genealogical proximity of the southern Okinawajima population of *G. k. kuroiwae* with *G. k. orientalis* rather than with the consubspecific population in the northern part of the island. The habitat of *G. kuroiwae* is largely confined to areas covered with humid vegetations, such as primary and well recovered secondary forests (Matsui and Ota, 1999). Thus, the broad, dry vegetational zone in the middle of Okinawajima (AJLSA, 1994), from which no *G. k. kuroiwae* have ever been found (Matsui and Ota, 1999), might have possibly been intervening the gene flow between populations on both sides. The small, but still substantial, genetic divergence between the *G. k. kuroiwae* populations from the northern and southern parts of the island seems to reflect a certain duration of such an isolation. Considerably close affinity of the southern Okinawajima population of *G. k. kuroiwae* with *G. k. orientalis* is puzzling, because, as long as the current geography is concerned, locality of the sample of *orientalis* examined here (Iejima) is closer to the northern part of Okinawajima. This may reflect a closer geohistorical relationship of Iejima with the southern part of Okinawajima than with the northern part.

The closer relationship of a diplodactyline species (*R. trachyrhynchus*) with eublepharids than with gekkonines (*Gekko gekko* and *Cyrtodactylus intermedius*), suggested by both NJ and parsimony analyses, is also puzzling because such a relationship needs to presume occurrences of either parallel derivations of a number of advanced character states shared by the diplodactyline and gekkonine geckos, or reversals of a number of characters to primitive states in the eublepharid lineage (Kluge, 1987; Grismer, 1988). Further analyses using more samples especially of representatives of Sphaerodactylinae (the other gekkonid subfamily: see Fig. 1), as well as of additional gekkonine and diplodactyline species, are strongly desired to confirm such diplodactyline rela-

tionship.

Kluge (1967) assumed that Southeast Asia was the center of origin of all extant gekkotan lineages and that diplodactyline geckos, having emerged there from eublepharid ancestor, dispersed into Australia through the Indo-Australian Archipelago during the late Mesozoic. With the subsequent general acceptance of the "mobile continents" and the revision of the cladistic hypothesis of Gekkota, he formulated a completely different scenario, in which divergences of eublepharids and diplodactylines from the others are, respectively, attributed to the breakup of Pangaea into Laurasia and Gondwanaland in 180 MYA, and more tentatively to the Africa-India and Australia-New Zealand separation of the latter in 85 MYA (Kluge, 1987). The secondary dispersal is assumed to explain the current occurrence of a few eublepharid genera in the Gondwana region (i.e., *Hemitheconyx* and *Holodactylus* in Africa) in this hypothesis. In the same year, King (1987a, b), based on the chromosomal and immunodistance data, and the fact that all major extant lineages occur in the Gondwana region, argued for the Gondwana origin of the whole Gekkota (Gekkonidae in his use). He considered the current Laurasian eublepharids (e.g., *Aeluroscalabotes* in Southeast Asia and *Coleonyx* in North America) as deriving from the secondary dispersal.

Based on a few morphological characters, Borner (1981) argued that *Holodactylus* in Africa is most primitive among the eublepharid genera. This account seems to lend some supports to King's (1987a, b) hypothesis. However, our results, along with results of morphological analysis by Grismer (1988), strongly suggest the most primitive status for the Laurasian *Aeluroscalabotes* and *Coleonyx*, and, contrary to the view of Borner (1981), most recent divergence of the Gondwanan *Holodactylus*, as well as of *Hemitheconyx*. These strongly suggest the Laurasian origin of the eublepharid geckos as was hypothesized by Kluge (1987). Closer affinity of *Rhacodactylus* with eublepharids suggested in our results may be indicative of the past dispersal of the diplodactyline ancestor to the Australia-New Zealand region directly from Laurasia (contra Kluge [1987] and King [1987a, b]).

## ACKNOWLEDGMENTS

We thank M. Matsui, K. Araya, M. Toda, S. Iwanaga, S. Tanaka and M. Toyama for helping with field sampling, M. Yokota for literature, and Y. Yasukawa for the arrangement to obtain fresh dead material from pet dealers for free of charge. We are also much indebted to N. Satoh, who allowed us to use his laboratory facility for mtDNA sequencing. Experiments were also carried out using the facility of the Kyoto University Museum. This research was partially supported by Grants-in-Aid from Japan Ministry of Education, Science, Sports and Culture (Overseas Researches No. 03041044 to T. Hidaka and No. 04041068 to M. Matsui, and Basic Researches C-09839024 to H. Ota and C-10836010 to T. Hikida), and a grant from the Fujiwara Natural History Foundation (to H. Ota). Financial support was also provided by Japan Agency of Environment, under the project entitled, "Genetic Diversity Survey of Japanese Wildlife".

*Goniurosaurus kuroiwae* has been designated as a natural monument of Okinawa Prefecture and the handling of this species is strictly

regulated by law. This research was carried out under the permission from the Section of Culture, Board of Education, Okinawa Prefectural Government, through the courtesy of M. Toyama, Y. Chigira and K. Tomari.

## REFERENCES

- All Japan Land Survey Association (AJLSA) (ed.) (1994) Land Conservation Map: Okinawa Prefecture. AJLSA, Japan (in Japanese)
- Borner AR (1981) The genera of Asian eublepharine geckos and a hypothesis of their phylogeny. *Misc Art Saurol Cologne* 9: 1–14
- Dial BE, Grismer LL (1992) A phylogenetic analysis of physiological-ecological character evolution in the lizard genus *Coleonyx* and its implications for historical biogeographic reconstruction. *Syst Biol* 41: 178–195
- Estes R, de Queiroz K, Gauthier J (1988) Phylogenetic relationships within Squamata. In "Phylogenetic Relationships of the Lizard Families" Ed by Estes R and Pregill G, Stanford University Press, Stanford, pp 119–281
- Felsenstein J (1985) Confidence limits on phylogenies: An approach using the bootstrap. *Evolution* 39: 783–791
- Felsenstein J, Kishino H (1993) Is there something wrong with the bootstrap on phylogeny? A reply to Hillis and Bull. *Syst Biol* 42: 193–200
- Grismer LL (1988) Phylogeny, taxonomy, classification, and biogeography of eublepharid geckos. In "Phylogenetic Relationships of the Lizard Families" Ed by Estes R and Pregill G, Stanford University Press, Stanford, pp 369–469
- Grismer LL (1989) *Eublepharis ensafi* Baloutch and Thireau, 1986: A junior synonym of *E. angramainyu* Anderson and Leviton, 1966. *J Herpetol* 23: 94–95
- Grismer LL (1991) Cladistic relationships of the lizard *Eublepharis turcmenicus* (Squamata: Eublepharidae). *J Herpetol* 25: 251–253
- Grismer LL, Ota H, Tanaka S (1994) Phylogeny, classification, and biogeography of *Goniurosaurus kuroiwa* (Squamata: Eublepharidae) from the Ryukyu Archipelago, Japan, with description of a new subspecies. *Zool Sci* 11: 319–335
- Hillis DM, Bull JJ (1993) An empirical test of bootstrapping as a method for assessing confidence in phylogenetic analysis. *Syst Biol* 42: 182–192
- Honda M, Ota H, Kobayashi M, Nabhitabhata J, Yong H-S, Hikida T (1999) Phylogenetic relationships of the flying lizards, genus *Draco* (Reptilia, Agamidae). *Zool Sci* 16: 535–549
- Kimura M (1980) A simple method for estimating evolutionary rate of base substitutions through comparative studies of nucleotide sequences. *J Mol Evol* 16: 116–120
- King M (1987a) Chromosomal evolution in the Diplodactylinae (Gekkonidae: Reptilia). I. Evolutionary relationships and patterns of change. *Aust J Zool* 35: 507–531
- King M (1987b) Origin of the Gekkonidae: Chromosomal and albumin evolution suggests Gondwanaland. *Search* 18: 252–254
- Kluge AG (1967) Higher taxonomic categories of gekkonid lizards and their evolution. *Bull Amer Mus Nat Hist* 135: 1–59
- Kluge AG (1987) Cladistic relationships in the Gekkonoidea (Squamata, Sauria). *Misc Publ Mus Zool, Univ Michigan* 173: 1–53
- Matsui M, Ota H (1999) Red Data Book of Japan. Amphibians and Reptiles. Japan Agency of Environment, Tokyo (in Japanese with English summary) (in press)
- Mindell DP, Honeycutt RL (1990) Ribosomal RNA in vertebrates: Evolution and phylogenetic application. *Ann Rev Ecol Syst* 21: 541–566
- Murphy RW (1974) A new genus and species of eublepharine gecko (Sauria: Gekkonidae) from Baja California, Mexico. *Proc California Acad Sci* 40: 87–92
- Ota H (1998) Geographic patterns of endemism and speciation in amphibians and reptiles of the Ryukyu Archipelago, Japan, with special reference to their paleogeographical implications. *Res Popul Ecol* 40: 189–204
- Ota H, Matsui M, Hikida T, Tanaka S (1987) Karyotype of a gekkonid lizard, *Eublepharis kuroiwa* *kuroiwa*. *Experientia* 43: 924–925
- Saitou N, Nei M (1987) The neighbor-joining method: A new method for reconstructing phylogenetic trees. *Mol Biol Evol* 4: 406–425
- Shaffer HB, Meylan P, McKnight ML (1997) Tests of turtle phylogeny: Molecular, morphological, and paleontological approaches. *Syst Biol* 46: 235–268
- Swofford DL (1993) Users Manual for PAUP Version 3.1: Phylogenetic Analysis Using Parsimony. Illinois Natural History Survey, Champaign, Illinois.
- Thompson JD, Higgins DG, Gibson TJ (1994) CLUSTAL W: improving the sensitivity of progressive multiple sequence alignment through sequence weighting, position specific gap penalties and weight matrix choice. *Nucl Acids Res* 22: 4673–4680
- Wada H, Makabe KW, Nakauchi M, Satoh N (1992) Phylogenetic relationships between solitary and colonial ascidians, as inferred from the sequence of the central region of their respective 18S rDNA. *Biol Bull* 183: 448–455

(Received April 16, 1999 / Accepted May 20, 1999)

**APPENDIX-1.** Specimens examined in this study.

*Iguana iguana*: A South American species, from pet dealer, KUZ 37209\*.

*Eumeces latiscutatus*: Kyoto City, Japan, KUZ 46592\*.

*Lygosoma bowringii*: Khao Chong, Thailand, KUZ 37884\*.

*Gekko gekko*: Kaeng Krachan, Thailand, KUZ 35397\*.

*Cyrtodactylus intermedius*: Chanthaburi, Thailand, 32823\*.

*Rhacodactylus trachyrhynchus*: A New Caledonian species, from pet dealer, KUZ 47440\*.

*Coleonyx mitratus*: A central American species, from pet dealer, KUZ 47330, 47331\*.

*Aeluroscalabotes felinus*: Sarawak, Malaysia, KUZ 27181\*; one uncatalogued specimen.

*Goniurosaurus* sp.: From pet dealer (localities unknown), KUZ 34556, 34557\*.

*G. kuroiwae kuroiwae*: Seiha, Chinen, southern part of Okinawajima, KUZ 8040\*; Yona, Kunigami, northern part of Okinawajima, KUZ 21014\*.

*G. k. orientalis*: Shiroyama, Iejima, KUZ 47418, 47441\*.

*G. k. splendens*: Tete, Amagi, Tokunoshima, KUZ 33025\*, 33030.

*Eublepharis macularius*: A Southwest Asian species, from pet dealer, KUZ 33169, 45197\*.

*Holodactylus africanus*: An African species, from pet dealer, KUZ 45191, 45192\*.

*Hemitheconyx caudicinctus*: An African species, from pet dealer, KUZ 32574\*.

\* Specimens, for which sequences are given in Appendix-2.

**APPENDIX-2.**

Aligned sequences of the mitochondrial DNA segment investigated. The initial 406 bp in each row correspond to the 12S rRNA gene sequence, whereas the remaining 473 bp, marked with an asterisk at the beginning, correspond to the 16S rRNA gene sequence. Dot indicates an identity with the first sequence; dash denotes a gap. Abbreviations are: II, *Iguana iguana*; EL, *Eumeces latiscutatus*; LB, *Lygosoma bowringii*; GG, *Gekko gekko*; CI, *Cyrtodactylus intermedius*; RT, *Rhacodactylus trachyrhynchus*; CM, *Coleonyx mitratus*; AF, *Aeluroscalabotes felinus*; GU, *Goniurosaurus* sp.; GS, *G. kuroiwae splendens*; GKN, *G. k. kuroiwae* from the northern part of Okinawajima; GKS, *G. k. kuroiwae* from the southern part of Okinawajima; GO, *G. orientalis*; EM, *Eublepharis macularius*; HA, *Holodactylus africanus*; HC, *Hemitheconyx caudicinctus*. Except for *G. k. kuroiwae*, each taxon is represented by a single specimen here (see Appendix-1).

	1	150
II	GCTTAGACGTTAACAC—GACACCCCTC—CCAC—ATCGGTGTTGCCAGAGAACTACTAGCGAAAGCTTAAACTCAAAGGACTTGGCGTGTCCACCCGACTTAGAGGAGCCTGTCTATAATCGATAATCCACGATAAACCTTACC	
EL	. . . C . . C . A . A . . . TAT . GT . GTA . AA . T . . . . A . AC . ACC . . . . . C . . A . T . . . . A . . . . . C . . . . . AT . A . C . . . . . T . CC . . C . . .	
LB	. . C . AC . C . A . . . TA . . . G . A . C . T . . . GAT . C . . . . . C . . G . A . . . . T . . . . . A . C . A . T . . . . C . . . . . G . . . . C . . . C . . . CC . .	
CI	. . . . C . . A . . . C . T . . T . G — TCAAA . . ACCAA—C . A . C . . . . . C . . A . . . . . CA . . . . . A . . . . . TC . . A . A . C . . . . . CT . . . CC . . . AT . . T . . . C . .	
GG	. . CC . . . . A . . . TTT . . T . GAA . CATATTAC . AATC . A . C . . . . G . G . C . . . . TA . TT . A . . . . C . . . . . A . . . . T . . TA . . AT . C . . . . . C . . . . . T . TT . . C . .	
RT	. . . . G . T . A . A . . C . A . . . TTTTAAA . . . A . AA . . C . . . . T . C . . A . T . . . . A . AG . . . . . A . . . . TC . . . AT . A . C . . . . . CC . . . . A . . . C . .	
AF	. . CC . . T . A . . . . TTC . . . GATATA . . T . . TC . CTC . . C . . . . C . . A . T . . . . A . . C . . . . C . . . . . A . . . . TTC . . TA . . A . AC . . . . . T . . . . . C . . . T . . T . . C . .	
CI	. . . . . C . A . A . . CTT . . T . TA . TA . . . . T . —AAAA . A . C . . . . C . . G . T . . . . A . . G . . . . T . . . . . A . . . . AT . . C . . . . . A . . . . CC . . . C . . . C . .	
EM	. . . . . C . A . A . . CTA . G . . AA . ATAA . . T . —GCA . . CC . . . . . C . . A . T . . . . A . . . . . C . . A . . . . . T . C . . . TAT . AG . C . . . . . CG . . . . . C . . . . . C . .	
GKN	. . . . . C . A . . . . CAA . . T . —TT . AA . . . . . CACC . C . . . . C . . A . TA . . . . . T . . . . . A . . . . TC . . . TAT . A . C . . . . . C . . . . C . . T . . . .	
GKS	. . . . . AC . A . A . . CAA . . T . ATT . AA . . . . . TACC . C . . . . C . . A . TA . . . . . T . . . . . A . . . . TC . . . TAT . A . C . . . . . C . . . . C . . T . . . .	
GO	. . . . . AC . A . A . . CAA . . T . ATT . AA . . . . . TACC . C . . . . C . . A . TA . . . . . T . . . . . A . . . . TC . . . TAT . A . C . . . . . C . . . . C . . T . . . .	
GS	. . . . . C . A . . . . CAA . . . . TTT . AA . . . . . CAAC . C . . . . C . . A . TA . . . . . T . . . . . A . . . . TC . . . TAT . A . C . . . . . C . . . . C . . T . . . .	
GU	. . . . . C . A . . . . CTA . T . TATT . T . . . ACAATA . A . . . . T . . . . T . . . . A . . . . T . . . . A . . . . C . . . TAT . A . C . . . . . C . . . . C . . T . . . .	
HC	. . . . . G . C . . . . . CTA . G . C . A . . C . A . T . . . . CAT . G . CC . . . . . T . . . . T . . . . G . . . . C . . . . A . . . C . C . . . A . . AC . . . . . G . C . . . C . TT . . . .	
HA	. . . . . C . A . . . . CAAAGAC . TAAAA . T . . C . CATAG . CC . . . . . T . . . G . . A . . G . . . . . C . . . . A . . . C . C . . . A . . A . C . . . . . C . C . . . T . T . . . C . .	
	151	300
II	ATTTTTTGGCCAC—ATCAGCCTATATACCGCGTCACCA—ACTTACCCCATGAGGGCCCAA—AAGTAAGTACAA—CAGTTTAAACAATAAAACGTCAGGTCAAGGTGTAGCTAATAAAATGG—AAGCGATGGGTACATTTTAAATA	
EL	. CC . . C . . . . . C . . . . . GTA . . G . C . . . . TTT . . AA . AAGT . . C . . . . C . A . . . . . TT . . GC . . . . . AC . . G . GG . . . . . A . . . . . C . GCC .	
LB	. CCCA . . . A . . . T . . . . . GT . . . G . C . . . . TT . . AA . TGAT . . . . GG . C . A . . . . . T . . . . . A . . GGGG . . . . . A . . . . . C . . GC .	
CI	. GAC . C . . AC . T . —G . . . . . G . . . G . C . . . . T . . . . A . TATTAT . . . G . C . . . . . —CC . AC . . . . . C . . . . . G . C . . . TT . . . . . C . T . —	
GG	CCC . C . . A . T . —C . . T . G . . . . . G . . . . . GTC . . . TTG . . AA . AA . TT . . GAC . A . . . . T . GA . CTTC . . . T . . . . . G . . . . C . . . . CGGGG . . . . . A . . . . . G . C . TTAT	
RT	CCC . C . A . . A . . —A . . . . . G . . . G . C . . . . TTG . . AA . A . ACC . . . . C . A . . CGTAGT . . TT . CCAC . . . . . AT . . G . GGC . . G . A . . . . . C . . . . A .	
AF	. C . C . . . . . C . T . . . . . T . TCG . . . . . AAA . . TC . . . . . CTA . . . . . AG . . A . —T . C . A . C . . . . . G . G . A . . T . . . . . C . C . . . A .	
CI	CCCCC . A . . CAC . — . . . . . GT . . . G . C . . . . TT . . AA . . AT . CC . . . . C . A . . . . TC . . . C . . AC . . A . . . . . T . . GGG . G . A . . . . . C . C . . A .	
EM	. C . CCC . . . TTAACCC . . . . . G . . . G . C . . . . T . . . . A . ATGT . . . T . GG . CTA . . . . AG . . CCT . . C . A . . . . . G . . . . . T . . GGGG . . G . A . . . . . C . C . . AT	
GKN	CCCCC . . . A . AC . . A . AT . . . . . GT . . . G . CC . . T . . . . A . . C . . . . G . . CTA . . . . AT . . AC . . TC . . A . . . . . TAT . . GGGG . . A . . . . . C . CA . .	
GKS	. . . . . CCCC . . . A . AC . . A . A . . . . . GT . . . G . CC . . T . C . . A . . . . T . . . . G . . CTA . . . . AT . . AC . . TC . . A . . . . . TAC . . G . GGC . . A . . . . . C . CA . . C .	
GO	CCCCC . . . A . AC . . A . A . . . . . GT . . . G . CC . . T . C . . A . . . . T . . . . G . . CTA . . . . AT . . AC . . TC . . A . . . . . TAT . . GGGG . . A . . . . . C . CA . .	
GS	. GCC . C . . A . A . . —A . . A . . . . . GT . . . G . CC . . T . C . . A . . T . . . . G . . CTA . . . . AT . . A . . —C . . A . . . . . TAT . . GGGG . . A . . . . . C . CA . GA .	
GU	. CCC . C . C . A . . — . . . . . GT . . . GTCC . . T . . . . A . AT . . . . GGAC . A . . . . TT . . CA . . —C . TA . . . . . G . GGC . . A . . AA . . . . . C . CC . . A .	
HC	. TCCCC . G . . . TAG . . . . . GT . . . G . CA . . . T . G . . . A . AT . A . GT . GGCC . A . C . . . GTCCA . . C . A . . . . . GGGG . . CC . . A . . . . . C . C . .	
HA	. CCCCC . A . . . . . — . . . . . GT . . . G . CA . . . T . . . A . . AAAC . G . . . G . C . A . . . AC . . C . TTTC . . A . . . . . C . . . . . GGGG . . AC . . A . . . . . CCC . . A .	



11	301	TAAACATACGGCAAA—GTGCCATGAAACCGCACTA—GAAGGTGGATTTAATAGTAAGATAAGCGAGA—AGACTTATCTAAACCGCTCTGAGCGCGCTGTCTCTCTA—AATAGG—ACTAGTATGAACGG—CTAAACGAGGG	*	450
EL		C. G. . A. C. . A. . C. . . . . C. C. T. A. . . . . T. T. G. G. C. . A. . . . . C. . . . . G. C. . . . . A. . . . . A. C. C. G. . . . . T. G. . . . . A. . . . . C. . . . . T. . . . . A		
LB		C. G. . A. C. . A. . C. G. . . . . C. A. A. . . . . T. A. C. G. T. G. C. C. A. . . . . C. . . . . G. C. . . . . G. A. A. . . . . T. A. C. A. C. . . . . G. T. . . . . A. G. T. . . . . T. . . . . A. A. . . . . T. . . . . A		
CI		C. . . . . G. A. A. . A. A. G. . C. A. C. A. G. . . . . A. C. C. T. G. C. . . . . A. . . . . G. C. . . . . A. C. . . . . T. G. C. A. G. A. . . . . T. G. T. G. C. A. T. G. . . . . G. . . . . C. A. . . . . G. A. . . . . T. . . . . C. C. . . . . G. C. . . . . T. . . . . C. T. . . . .		
GG		. . . . . C. G. C. C. T. A. C. T. C. A. C. T. A. . . . . T. A. T. A. G. . . . . T. . . . . T. C. . . . . G. . . . . A. C. C. . . . . G. C. A. G. T. . . . . C. T. G. C. G. A. T. G. . . . . A. A. . . . . A. . . . . T. . . . . C. C. T. . . . . G. . . . . G. . . . . G. . . . . T. . . . .		
RT		A. G. . . . . A. C. A. C. T. A. . . . . —C. A. . . . . T. . . . . T. A. A. G. T. G. T. A. . . . . A. C. . . . . G. C. . . . . C. . . . . T. T. . . . . C. . . . . C. T. A. A. C. T. G. A. . . . . A. T. . . . . G. A. . . . . T. . . . . G. . . . . T. . . . . G. . . . . C. T. . . . .		
AF		. . . . . G. —. . . . . A. T. A. . . . . C. C. A. C. A. G. A. . . . . —T. C. T. G. . . . . T. A. T. . . . . G. . . . . A. C. . . . . A. A. . . . . C. . . . . T. T. T. . . . . G. T. G. . . . . T. T. . . . . G. A. . . . . T. . . . . T. . . . . A. A. . . . . C. . . . . T. . . . . T. . . . .		
CI		. . . . . G. G. —. . . . . A. T. A. . . . . A. A. C. A. T. . . . . A. T. G. . . . . C. . . . . C. . . . . A. . . . . G. A. . . . . G. A. C. G. G. A. T. . . . . C. A. T. C. C. A. T. C. G. . . . . C. . . . . C. . . . . A. . . . . T. . . . . T. . . . . A. A. . . . . C. . . . . C. . . . . T. . . . . A		
EM		. . . . . G. G. —. . . . . A. T. T. A. . . . . C. A. G. A. A. A. T. . . . . T. T. A. . . . . A. C. G. T. . . . . G. A. . . . . A. T. G. A. A. . . . . A. G. T. C. G. T. G. . . . . T. T. . . . . G. A. T. T. . . . . A. . . . . A. . . . . T. . . . . T. . . . .		
GKN		. . . . . G. G. —. . . . . A. C. A. . . . . T. A. A. . . . . A. A. . . . . —C. C. T. . . . . T. . . . . A. . . . . G. A. . . . . A. . . . . G. A. A. . . . . A. T. C. C. T. G. C. A. A. . . . . G. A. . . . . T. . . . . T. C. T. . . . . A. A. C. . . . . C. . . . . T. . . . . A		
GKS		. . . . . G. G. —. . . . . A. T. A. . . . . C. A. A. C. A. . . . . —C. C. T. . . . . C. . . . . A. . . . . G. A. . . . . A. C. . . . . G. A. A. . . . . A. T. C. C. T. G. C. A. A. . . . . G. A. . . . . T. . . . . T. C. . . . . A. A. . . . . C. . . . . T. . . . . A		
GO		. . . . . G. G. —. . . . . A. T. A. . . . . C. A. A. C. A. . . . . —C. T. . . . . C. . . . . A. . . . . G. A. . . . . A. C. . . . . G. A. A. . . . . A. T. C. C. T. G. C. A. A. . . . . G. A. . . . . T. . . . . T. C. . . . . A. A. . . . . C. . . . . T. . . . . A		
GS		. . . . . G. G. —. . . . . A. A. A. . . . . C. A. A. C. A. . . . . —T. A. C. T. G. C. . . . . C. . . . . A. . . . . G. A. . . . . A. C. . . . . G. A. A. . . . . A. T. C. . . . . A. T. G. . . . . C. T. A. T. . . . . G. A. . . . . T. . . . . T. C. . . . . A. A. . . . . C. . . . . T. . . . .		
GU		C. G. G. C. . . . . —C. G. A. T. —. . . . . A. T. A. . . . . T. T. T. T. C. C. T. . . . . C. . . . . G. A. . . . . A. T. A. G. A. . . . . A. . . . . A. C. . . . . A. T. G. C. . . . . T. . . . . G. . . . . T. . . . . T. . . . . T. . . . . A		
HC		. . . . . G. G. . . . . C. . . . . A. C. . . . . C. G. G. C. C. A. T. . . . . —C. C. T. G. C. G. T. . . . . G. A. . . . . A. T. A. G. G. . . . . A. . . . . T. G. T. T. . . . . A. G. C. C. T. C. T. G. . . . . G. . . . . T. . . . . G. T. G. . . . . T. . . . . T. C. . . . . A. A. . . . . C. C. . . . . T. . . . . A		
HA		A. G. G. T. C. A. . . . . T. . . . . —A. . . . . —A. T. G. . . . . A. C. . . . . T. . . . . G. A. . . . . A. T. C. . . . . G. C. A. G. A. T. C. C. A. G. C. C. T. A. T. G. . . . . G. T. . . . . C. . . . . G. G. . . . . T. . . . . T. T. . . . . A. A. . . . . C. C. . . . . T. . . . . C. . . . . T. . . . .		
11	451	TTAACCTGTCTCCTTAGACCAATCAGTGAAACTGATCTGCCAGTACAAAGCTGACATAGCAACATAAGACGAGAAGACCCCTGTGGAGCTTTAGACTGACAGCCAAACCAACCCACCTCACC—CC		600
EL		. . . . . T. . . . . T. G. C. A. . . . . C. . . . . G. . . . . C. . . . . G. A. . . . . A. C. C. . . . . A. A. . . . . A. A. G. T. A. T. G. . . . . . . . . . A. A. G. . . . . G. —. . . . . C. . . . .		
LB		C. A. C. . . . . A. T. . . . . . . . . . T. . . . . G. . . . . G. A. . . . . G. T. G. C. . . . . . . . . . C. A. . . . . C. A. T. T. A. T. C. A. —. . . . . G. —. . . . .		
CI		C. A. C. A. . . . . A. . . . . T. A. . . . . C. . . . . T. G. . . . . T. A. C. . . . . . . . . . A. T. A. C. T. G. C. G. T. . . . . C. . . . . A. A. . . . . A. G. C. . . . . A. —. . . . . A. G. G. G. C. A. C. G. C. A. A. C. A. T. A		
GG		C. G. T. . . . . G. . . . . T. A. . . . . T. T. . . . . A. . . . . T. C. A. C. T. . . . . A. C. . . . . . . . . . A. A. . . . . C. T. A. T. A. T. C. A. A. C. . . . . T. T. T. A. . . . . C. T. . . . . A. C. T. C. C. C. G. G. A. G. G. C. A. C. C. T. T. A. A. A. T		
RT		C. C. T. A. . . . . A. . . . . G. T. T. . . . . A. . . . . T. . . . . A. . . . . A. A. C. . . . . . . . . . A. A. . . . . C. A. . . . . C. T. A. T. . . . . A. T. C. C. . . . . T. T. T. . . . . G. G. G. A. A. A. C. . . . . A. C. C. C. A. T. A. C. C. A. C. T. . . . .		
AF		C. C. T. A. . . . . A. T. C. G. T. . . . . A. . . . . C. . . . . T. T. . . . . T. . . . . A. G. A. . . . . T. G. C. . . . . . . . . . A. A. . . . . A. A. C. A. T. . . . . A. T. G. T. T. . . . . T. T. . . . . A. T. . . . . —. . . . .		
CI		C. C. T. A. . . . . A. T. . . . . T. A. . . . . C. C. . . . . G. A. G. . . . . C. A. T. C. . . . . . . . . . T. A. . . . . C. A. C. . . . . T. A. T. C. . . . . C. T. . . . . A. . . . . T. A. A. C. A. . . . . G. A. A. C. C. C. A. A. A. . . . .		
EM		C. C. T. A. . . . . C. A. T. A. T. T. G. . . . . A. . . . . C. T. . . . . A. . . . . C. A. C. C. . . . . . . . . . T. A. T. A. . . . . T. C. A. T. C. T. T. . . . . T. C. A. T. C. T. A. G. . . . . T. T. A. G. . . . . —. . . . .		
GKN		C. C. T. G. A. . . . . C. G. T. A. G. T. T. . . . . A. . . . . C. . . . . T. T. . . . . A. . . . . A. A. C. . . . . . . . . . —A. G. . . . . A. C. A. C. T. A. T. T. . . . . A. T. G. T. T. A. . . . . T. A. C. A. C. A. . . . . A. G. G. C. A. T. C. A. A. A. C. C. C. A. T		
GKS		C. C. T. A. . . . . C. A. T. A. G. T. . . . . A. . . . . C. . . . . C. T. . . . . A. . . . . A. A. C. . . . . . . . . . —A. G. C. A. T. A. T. T. . . . . A. T. G. T. T. A. . . . . T. A. C. A. C. A. . . . . A. G. G. C. A. T. C. A. A. A. C. C. C. A. T		
GO		C. C. T. A. . . . . C. A. T. A. G. T. . . . . A. . . . . C. . . . . C. T. . . . . A. . . . . A. A. C. . . . . . . . . . —A. G. C. A. T. A. T. T. . . . . A. T. G. T. T. A. . . . . T. A. C. A. C. A. . . . . A. G. G. C. A. T. C. A. A. A. C. C. C. A. T		
GS		C. C. T. A. . . . . C. A. T. G. T. T. . . . . A. . . . . C. . . . . C. T. . . . . G. . . . . T. A. C. . . . . . . . . . —A. G. . . . . A. C. A. C. T. A. T. T. . . . . A. T. G. T. T. A. . . . . T. A. C. A. C. A. . . . . C. G. G. T. A. T. A. A. A. A. T. T. C. A. T		
GU		C. C. T. A. . . . . C. G. T. A. . . . . A. T. . . . . T. . . . . A. . . . . C. A. C. C. . . . . . . . . . A. . . . . A. . . . . T. T. G. T. A. . . . . A. A. C. T. A. T. G. T. C. A. . . . . T. T. T. G. . . . . C. C. T. A. C. T. T. A. A. A. C. A. T. A. A. A		
HC		C. C. A. . . . . T. C. T. G. . . . . G. A. . . . . C. . . . . T. T. . . . . A. . . . . C. A. C. . . . . . . . . . A. A. G. T. A. C. T. G. T. C. . . . . T. C. C. C. . . . . T. —. . . . .		
HA		C. C. C. A. . . . . T. . . . . A. T. G. A. . . . . A. . . . . T. T. . . . . A. . . . . C. A. C. . . . . . . . . . —A. . . . . A. . . . . G. T. G. T. C. . . . . A. . . . . C. A. C. T. T. G. . . . . —. . . . .		
11	601	CATGGCTAAAGT—CTTAAGTTGGGGCGACTTCGGAGCAAAAACAAACCTCCAAGCAACGAACATCCAT—CTTCCCTAAGGCAACACGCCAAAGCAA—ACAACA—GACCCAGTA—CCACTGACCATCGAACCAAGTTAC		750
EL		A. C. A. T. A. G. T. . . . . T. . . . . A. C. . . . . A. . . . . T. . . . . G. . . . . C. A. G. A. C. . . . . C. . . . . T. C. T. A. C. . . . . A. C. . . . . A. T. . . . . C. . . . . C. A. . . . . A. C. . . . . A. . . . . T. . . . . A		
LB		—C. A. T. A. T. . . . . T. . . . . A. . . . . A. . . . . C. . . . . T. . . . . C. A. G. A. G. . . . . C. A. A. C. C. . . . . T. C. C. . . . . T. . . . . C. . . . . A. . . . . T. . . . . A. C. A. C. A. C. A. C. A. T. . . . . C. A. T. . . . . T. . . . . A		
CI		. . . . . G. A. A. T. A. G. C. C. C. A. T. T. . . . . G. . . . . A. . . . . T. . . . . T. . . . . A. . . . . A. A. G. T. A. A. C. C. . . . . C. C. . . . . A. C. . . . . —A. C. . . . . A. T. C. . . . . G. G. C. A. C. C. T. C. C. C. A. T. . . . . A. A. . . . . T. . . . . A		
GG		. . . . . G. A. T. A. G. . . . . T. T. A. A. T. T. . . . . G. . . . . A. T. . . . . A. . . . . T. T. . . . . C. A. . . . . A. C. A. G. A. T. C. A. . . . . A. . . . . T. C. C. A. T. C. . . . . A. C. . . . . A. T. . . . . A. A. C. A. C. A. C. T. . . . . T. . . . . T. A. . . . .		
RT		A. . . . . C. A. T. A. G. C. . . . . A. G. G. T. T. . . . . C. . . . . T. . . . . A. T. . . . . T. . . . . T. . . . . T. . . . . C. G. . . . . C. T. C. A. T. —. . . . . C. T. A. T. C. . . . . C. . . . . T. . . . . A. T. . . . . A. A. T. T. T. T. T. . . . . C. . . . . T. G. C. . . . . T. . . . . A		
AF		—A. . . . . T. G. T. C. T. G. C. —. . . . . T. . . . . T. . . . . A. . . . . T. . . . . A. A. . . . . A. G. . . . . T. . . . . T. A. T. —. . . . . T. G. C. A. G. G. T. G. T. A. T. A. C. A. G. C. C. T. A. T. T. A. C. G. . . . . G. . . . . T. . . . . A. T. T. A. A. T. A. . . . . A. T. . . . . A. . . . . T. . . . .		
CI		T. . . . . A. T. A. C. A. T. A. . . . . T. . . . . A. . . . . A. . . . . —A. A. . . . . G. A. . . . . T. . . . . T. A. C. . . . . G. C. G. . . . . —. . . . . G. T. A. . . . . A. A. C. . . . . T. . . . . T. C. C. A. . . . . C. T. T. . . . . T. A. . . . . T. . . . . A. T. . . . . A. T. . . . .		
EM		—A. A. T. G. C. . . . . A. . . . . T. . . . . T. T. T. A. A. . . . . G. . . . . T. A. . . . . A. C. A. T. . . . . A. C. T. T. —. . . . . A. T. . . . . —G. C. . . . . A. T. T. . . . . G. C. T. A. T. T. A. C. T. A. —. . . . . T. A. A. . . . . T. A. . . . .		
GKN		T. . . . . A. A. T. A. G. . . . . A. . . . . T. A. A. A. C. . . . . A. . . . . T. T. . . . . T. A. . . . . A. C. . . . . T. T. G. T. A. G. G. . . . . —G. T. A. A. G. C. . . . . A. A. G. C. . . . . A. A. C. . . . . A. T. T. . . . . C. . . . . A. . . . . A. T. . . . . A. . . . .		
GKS		T. . . . . A. A. T. A. G. . . . . A. . . . . T. A. A. A. C. . . . . A. . . . . T. T. T. . . . . A. C. . . . . T. T. G. T. A. G. G. . . . . T. A. T. T. A. A. C. . . . . A. A. G. C. . . . . A. A. C. . . . . A. T. T. . . . . C. . . . . A. . . . . A. T. . . . . A. . . . .		
GO		T. . . . . A. A. T. A. G. . . . . A. . . . . T. A. A. A. C. . . . . A. . . . . T. T. . . . . A. C. . . . . T. T. G. T. A. G. G. . . . . T. A. T. T. A. A. C. . . . . A. A. G. C. . . . . A. A. C. . . . . A. T. T. . . . . C. . . . . A. . . . . A. T. . . . . A. . . . .		
GS		T. . . . . A. A. T. A. C. A. —. . . . . T. . . . . A. . . . . T. A. A. A. C. . . . . A. T. . . . . T. T. . . . . T. . . . . T. T. G. T. A. G. G. . . . . —A. T. A. A. T. C. . . . . C. A. G. C. . . . . A. A. C. . . . . A. T. T. G. . . . . C. . . . . A. . . . . A. C. . . . . T. A. . . . . T. A. . . . .		
GU		T. . . . . A. C. . . . . A. A. . . . . C. . . . . A. . . . . T. T. . . . . A. A. . . . . A. G. . . . . T. . . . . —A. T. A. G. A. C. C. A. —. . . . . A. C. G. T. C. A. A. . . . . A. C. T. . . . . T. C. T. T. . . . . T. A. A. T. T. T. T. —. . . . . C. A. T. . . . . T. A. . . . . T. . . . .		
HC		—A. . . . . A. C. C. C. A. —. . . . . A. . . . . T. . . . . —A. A. . . . . T. T. . . . . A. C. A. T. T. . . . . C. G. A. —. . . . . —. . . . . A. A. C. C. . . . . T. . . . . A. . . . . T. C. C. T. G. C. A. C. T. A. . . . . A. C. . . . . A. G. . . . . A. . . . .		
HA		—A. . . . . A. C. C. C. A. —. . . . . T. . . . . A. . . . . T. . . . . A. A. . . . . T. . . . . A. T. . . . . T. C. T. C. T. C. G. —. . . . . —. . . . . T. A. . . . . T. G. . . . . A. . . . . T. C. A. C. T. C. . . . . C. . . . . C. A. A. . . . . T. T. A. . . . .		
11	751	CCCAGGGATAACAGCGCTACTCTTCTCAAGATGCCATATCGACAAGAAGGTTTACGACCTCGATGTTGGATCAGGACACCCAAATGCGTGGAGCGCGCTATTAAACGCTTGGTTGTTTCAACGATTAAACGAT		
EL		. . . . . C. . . . . T. . . . . . . . . . C. . . . . A. . . . .		
LB		. . . . . . . . . . A. . . . . T. G. T. —		
CI		. . . . . C. C. C. . . . . C. . . . . C. . . . . G. G. C. . . . . . . . . . C. G. G. . . . . A. A. . . . . C. . . . . A. C. . . . . G. C. . . . . T. G. T. —		
GG		. . . . . C. . . . . C. C. . . . . C. . . . . C. . . . . G. G. C. . . . . . . . . . A. . . . . G. . . . . C. . . . . C. . . . . A. . . . . T. G. T. —		
RT		. . . . . C. . . . . C. . . . . T. . . . . G. . . . . G. G. . . . . A. . . . . C. C. . . . . A. . . . . T. . . . .		
AF		. . . . . A. . . . . C. T. . . . . T. T. . . . . C. . . . . . . . . . C. . . . . T. . . . . A. . . . . T. G. T. —		
CI		. . . . . A. . . . . C. C. . . . . T. C. . . . . C. . . . . G. G. C. . . . . . . . . . G. . . . . A. . . . . C. A. . . . . C. A. . . . . T. G. T. —		
EM		. . . . . A. . . . . C. . . . . C. . . . . G. . . . . T. . . . . T. . . . . T. . . . . G. . . . . C. . . . . G. . . . .		
GKN		. . . . . A. . . . . C. . . . . T. . . . . T. . . . . G. . . . . G. A. . . . . C. . . . . T. . . . .		
GKS		. . . . . A. . . . . C. . . . . T. . . . . T. . . . . G. . . . . G. A. . . . . C. . . . . T. . . . .		
GO		. . . . . A. . . . . C. . . . . T. . . . . T. . . . . G. . . . . G. A. . . . . C. . . . . T. . . . .		
GS		. . . . . A. . . . . C. . . . . T. . . . . T. . . . . G. . . . . C. . . . . G. A. . . . . C. . . . .		
GU		. . . . . T. . . . . A. . . . . C. . . . . T. . . . . C. . . . . G. . . . . C. . . . . A. . . . .		
HC		. . . . . A. . . . . C. . . . . C. . . . . C. . . . . G. . . . . C. . . . . C. . . . .		
HA		. . . . . A. . . . . C. . . . . T. . . . . C. . . . . G. . . . . C. . . . . C. . . . . A. . . . . T. . . . .		