

The Germ Cell Lineage Identified by vas-mRNA during the Embryogenesis in Goldfish

Authors: Otani, Satoshi, Maegawa, Shingo, Inoue, Kunio, Arai, Katsutoshi, and Yamaha, Etsuro

Source: Zoological Science, 19(5) : 519-526

Published By: Zoological Society of Japan

URL: <https://doi.org/10.2108/zsj.19.519>

BioOne Complete (complete.BioOne.org) is a full-text database of 200 subscribed and open-access titles in the biological, ecological, and environmental sciences published by nonprofit societies, associations, museums, institutions, and presses.

Your use of this PDF, the BioOne Complete website, and all posted and associated content indicates your acceptance of BioOne's Terms of Use, available at www.bioone.org/terms-of-use.

Usage of BioOne Complete content is strictly limited to personal, educational, and non - commercial use. Commercial inquiries or rights and permissions requests should be directed to the individual publisher as copyright holder.

BioOne sees sustainable scholarly publishing as an inherently collaborative enterprise connecting authors, nonprofit publishers, academic institutions, research libraries, and research funders in the common goal of maximizing access to critical research.

The Germ Cell Lineage Identified by *vas*-mRNA during the Embryogenesis in Goldfish

Satoshi Otani^{1, 3*}, Shingo Maegawa², Kunio Inoue², Katsutoshi Arai¹
and Etsuro Yamaha³

¹Laboratory of Breeding Science, Graduate School of Fisheries Sciences, Hokkaido University, Hakodate, 041-8611, Japan

²Molecular and Developmental Biology, Graduate School of Biological Sciences, Nara Institute of Science and Technology, Ikoma 630-0101, Japan

³Nanae Fresh Water Laboratory, Field Science Center for Northern Biosphere, Hokkaido University, Nanae, 041-1105, Japan

ABSTRACT—*vas* RNA has been identified in germ-line cells and its precursors in zebrafish, with the result that the germ-line lineage can be traced throughout embryogenesis. In the present study, we described *vas* localization and the migration of *vas*-positive cells in goldfish, using whole mount *in situ* hybridization. The signals of *vas* mRNA localization appeared at the marginal part of the first to third cleavage planes. The eight signals were detected during the period from the 8- cells to the 512-cell stage. At the late-blastula stage, additional numbers of *vas*-positive cells were observed, suggesting the proliferation of these cells. At the segmentation period, *vas*-positive cells showed a long extended distribution along the embryonic axis, but did not form any clusters. *vas*-positive cells were occasionally distributed at the head region, especially around the future otic vesicle. These signals were inherited to the primordial germ cells, suggesting that *vas*-positive cells were primordial germ cells (PGCs) in goldfish.

Key words: goldfish, PGCs, primordial germ cell, *vas*, zebrafish

INTRODUCTION

Primordial germ cells (PGCs) play a unique role in providing a continuity of life from generation to generation. In most animals, PGCs are set apart early during development and migrate to the gonadal anlage later in development (Gilbert, 2000). In the species in which the migration of PGCs has been studied, PGCs are identified during the early stages by peculiar elements, such as germ plasm (or pole plasm in *Drosophila*) (reviewed in Ikenishi, 1998) or the enzymatic activity of alkaline phosphatase (Mintz and Russell, 1957). Recently, a gene homologue related to *Drosophila vasa* has been introduced as a specific marker of the germ line cells in rats (Komiya and Tanigawa, 1995), in mice (Fujiwara *et al.*, 1994), chick (Tsunekawa *et al.*, 2000) and *Xenopus* (Komiya *et al.*, 1994; Ikenishi and Tanaka, 1997). These results suggest that *vasa* homologue is useful as a germ line specific marker in vertebrates.

In teleost, recent studies on *vas* (a *Drosophila vasa*

homologue) mRNA have been successfully identified in germ cell precursors in zebrafish (Yoon *et al.*, 1997; Olsen *et al.*, 1997; Weindinger *et al.*, 1999), medaka (Shinomiya *et al.*, 2000), and rainbow trout (Yoshizaki *et al.*, 2000). In zebrafish, PGC's progenitors containing *vas* mRNA localized at the lower border of the blastoderm at the blastula stage, migrated to the dorsal side with convergence movements, and formed two clusters at the level of the first somite during the early segmentation stage (Yoon *et al.*, 1997; Weindinger *et al.*, 1999). In medaka, blastomeres expressing *olvas* (*Oryzias latipes vasa* homologue) were first detected in the posterior one-third of the embryonic shield, but were not observed before the late-gastrula stage (Shinomiya *et al.*, 2000). Blastomeres containing *olvas* mRNA moved in the embryonic body at the early neurula stage and were then lined along the anterior-posterior axis on both sides of the embryonic body by the 4-somite stage (Shinomiya *et al.*, 2000). In rainbow trout, *vas* expressing cells were detected only after the eyed stage (80 somite) (Yoshizaki *et al.*, 2000). These results show that the location of *vas* mRNA is not always the origin of PGCs in all fish species. They also suggest that PGCs containing *vas* mRNA show different distributions and migration routes to the

* Corresponding author: Tel. +81-138-65-2344;
FAX. +81-138-65-2237.
E-mail: otani@fish.hokudai.ac.jp

gonadal anlage during embryogenesis in each species.

In goldfish, *Carassius auratus*, PGCs have been identified only histologically (Kazama-Wakabayashi *et al.*, 1999). Goldfish PGCs were first detected widely in the region from head to trunk along the embryonic axis at 30 h post-fertilization (hpf) (7–9 somite stage). Although PGCs were not histologically detected before 30 hpf, micro-surgical experiments suggest that potential PGCs are located at the lower part of blastoderm at the blastula stage (Kazama-Wakabayashi *et al.*, 1999). In the present study, we identified the distribution of *vas* mRNA in goldfish by *in situ* hybridization in order to elucidate the location of PGCs during the early embryogenesis and to compare PGCs migration with other species of teleost.

MATERIALS AND METHODS

Fertilization and Dechoriation

Goldfish, *Carassius auratus*, were reared in the Nanae Fresh Water Laboratory, Field Science Center for Northern Biosphere, Hokkaido University. Ovulation was induced by hormonal injection and artificial insemination and fertilization were performed as previously described (Yamaha *et al.*, 1998). Briefly described, inseminated eggs were fertilized in the fertilization solution, containing 0.2% urea and 0.25% NaCl in tap water. Dechoriation was car-

ried out before blastodisc formation using a method slightly modified from an established procedure (Yamaha *et al.*, 1986). Fertilized eggs were dechorionated with 0.1% Trypsin (DIFCO) and 0.4% urea in Ringer's solution (128 mM NaCl, 2.8 mM KCl, 1.8 mM CaCl₂). Embryos were cultured in Ringer's solution containing 1.6% albumen at 20°C. Developmental stages of goldfish before 15 hpf were determined according to Yamaha *et al.* (1999), and after 15 hpf according to Kajishima (1960).

Whole-mount *in situ* hybridization analyses

Dechorionated embryos were fixed with 4% paraformaldehyde in phosphate-buffered saline (PBS) for overnight at 4°C at every stage during development. Fixed embryos were stored in 100% methanol at -20°C. Two-color *in situ* hybridization was performed as described by Jowett and Lettice (1994) with slight modifications using a 0.4Kb fragment from the 3'-UTR region of *vas* cDNA in zebrafish as a template. *no tail (ntl)* in zebrafish and *myoD* in goldfish were used for the marker gene. After *in vitro* transcription, the RNA probe was purified using ProbeQuant G-50 Micro columns (amasham pharmacia biotech). Proteinase K treatment was performed for 10 min at 10 µg/ml for early stage embryos, for 20 min at 10 µg/ml for somite-stage embryos, and 20 min at 20 µg/ml for 4 day larvae. For double *in situ* hybridization, RNA probes were labeled with digoxigenin for *vas* and *MyoD*, and labeled with Fluorescein Isothiocyanate (FITC) for *ntl*. Hybridized temperature was at 55°C.

After staining, embryos were cleared in 50% glycerol, and mounted on a dimple of an agarose plate. Photographs were taken

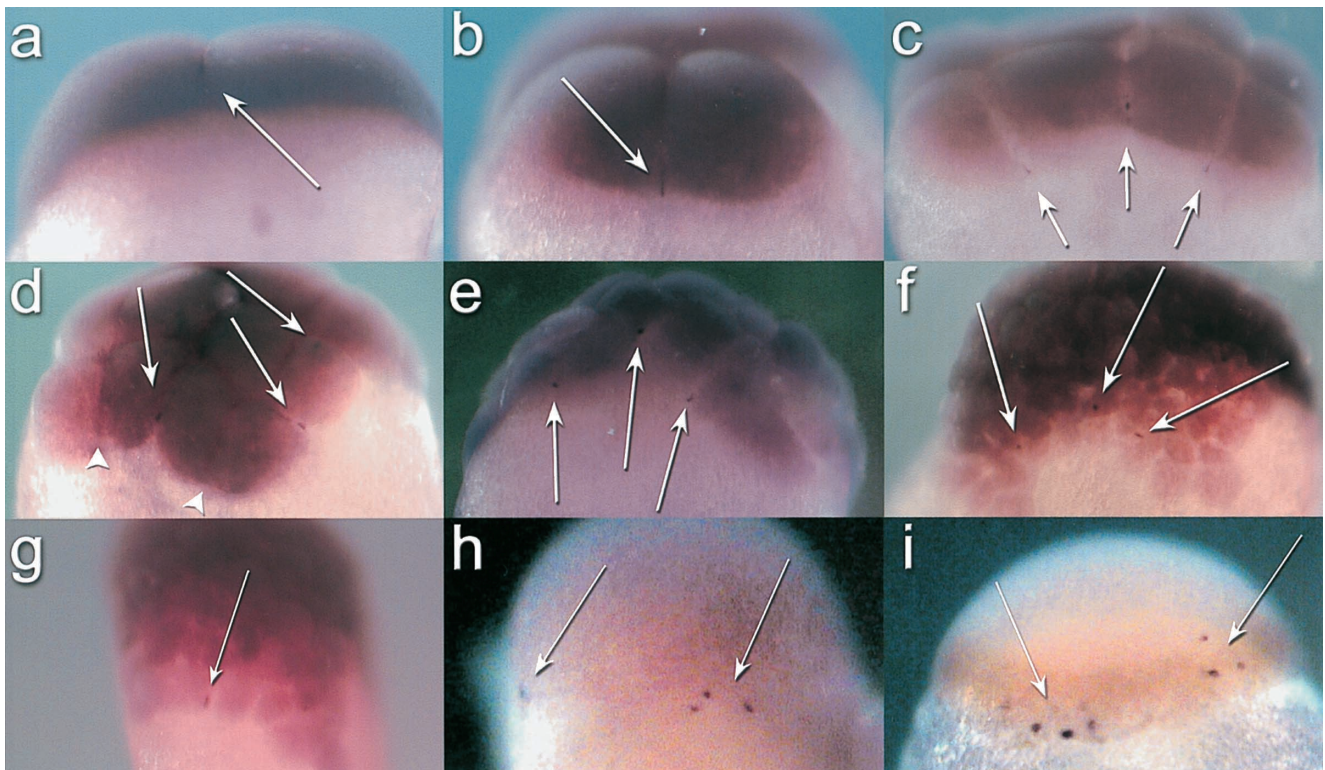


Fig. 1. Whole-mount *in situ* hybridization from the early cleavage to the late blastula stage. Embryos were hybridized with a *vas* (purple: a-h) or *vas* and *ntl* (brown: i) riboprobe. Each panel shows a side view of embryos. Arrows indicate *vas* signals. (a) 2-cell stage; a dense signal is detected on the marginal part of the cleavage plane, though the entire cytoplasm of blastodisc is stained faintly. (b) 4-cell and (c) 8-cell stage; *vas* signals are clearly visible on the marginal parts of the cleavage planes. (d) 16-cell stage; *vas* signals are localized on the 1st, 2nd, and 3rd cleavage planes, but not on the 4th cleavage planes (arrowheads). (e) 32-cell stage. (f, g) 256-cell stage; *vas* signals of the same embryo. Three signals are detected on one side (f), and single signals on the other side (g). (h) 512-cell stage; three and single signals are observed. (i) late-blastula; plural *vas* signals are detected on every cluster. Almost all signals distribute in the marginal part, expressing *ntl*.

using an Olympus CAMEDIA imaging system DS3030U equipped with a SZX-12 stereomicroscope. For histological observation, stained embryos were refixed with 4% paraformaldehyde and 0.25% glutaraldehyde in PBS, and embedded in a paraffin block. Photographs were taken using an Olympus CAMEDIA C3040 equipped with a BH-2 microscope.

RESULTS

In goldfish, localization of *vas* mRNA was identified during development by using a *vas* probe from zebrafish. The maternal *vas* message was not localized in freshly fertilized

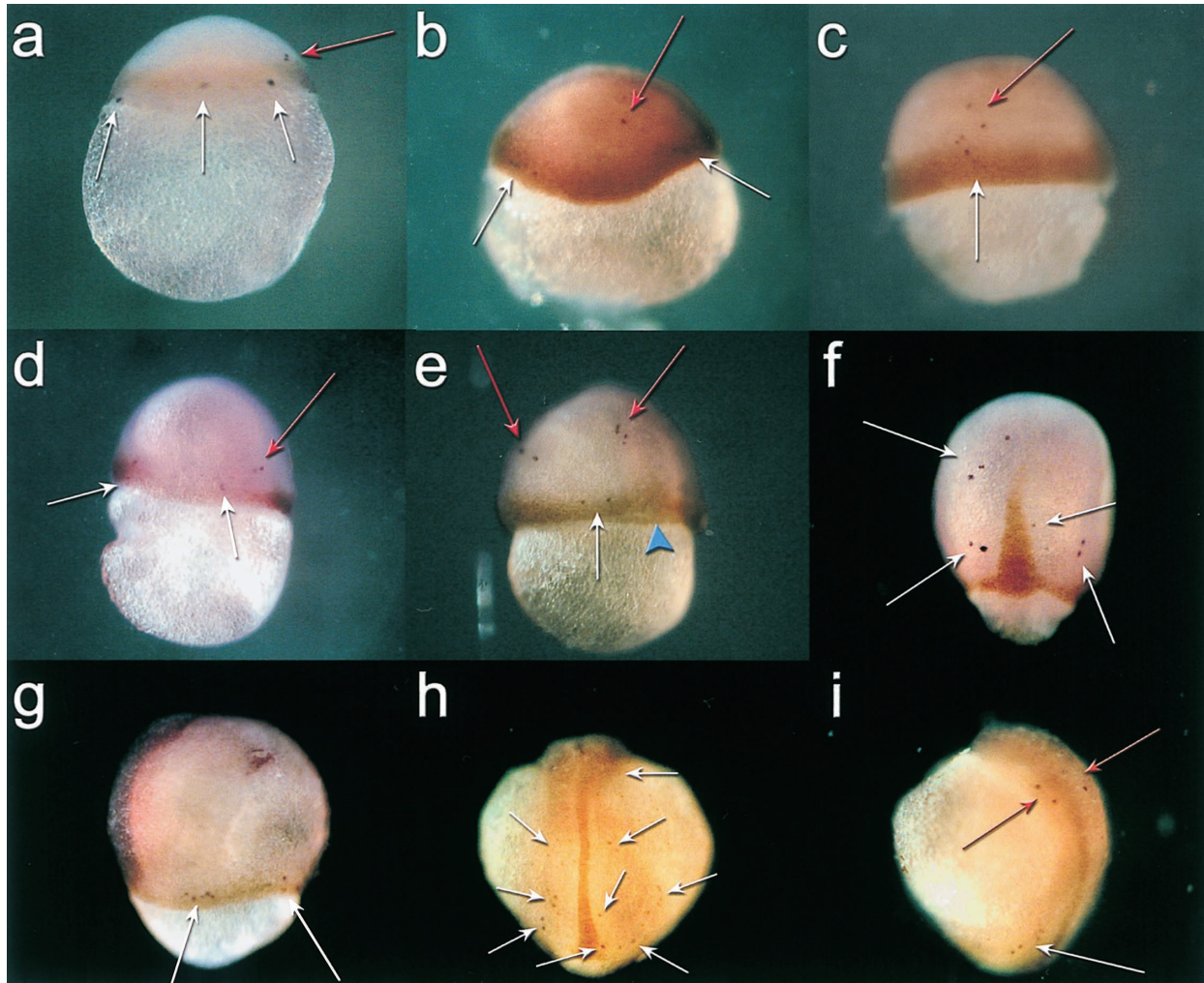


Fig. 2. Whole-mount *in situ* hybridization on embryos during gastrulation. The *vas*-positive cells are stained with dark purple (indicated with arrows) and *ntl*-expressing domain are labeled in light brown. (a) late-blastula. (b) dome. (c) 30% epiboly. (d) 50% epiboly. Many *vas*-positive cells are located in the *ntl*-expressing region (white arrow), but some cells are located outside of this region (red arrow). (e) shield; *vas*-positive cells are located on the upper part of the blastoderm (red arrow). Some cells are located above the embryonic shield (blue arrowhead). (f) 70% epiboly (dorsal view); *vas*-positive cells show wide distribution along the axis. (g) 70% epiboly (lateral view, different embryo from f); *vas*-positive cells are observed in the *ntl*-expressing region. (h) 100% epiboly (dorsal view). (i) 100% epiboly (lateral view; the same embryo with (h)); almost all *vas*-positive cells are located on the trunk region (h) but some cells are located at the head region (red arrow).

Table 1. The frequency of embryos with *vas*-expressing cells located out of blastoderm margin

| stage | N | Normal (%) (In mesodermal region) | Ectopic(%) (Out of mesodermal region) | Undistinguishable |
|-----------------------|----|--------------------------------------|--|-------------------|
| 6 hpf (mid blastula) | 31 | 29 (94) | 2 (6) | 0 |
| 8 hpf (late blastula) | 42 | 24 (57) | 16 (38) | 2 |
| 10 hpf | 85 | 31 (36) | 48 (56) | 6 |
| 12 hpf (30% epiboly) | 30 | 11 (37) | 16 (53) | 3 |
| 14 hpf (50% epiboly) | 31 | 13 (42) | 16 (52) | 2 |

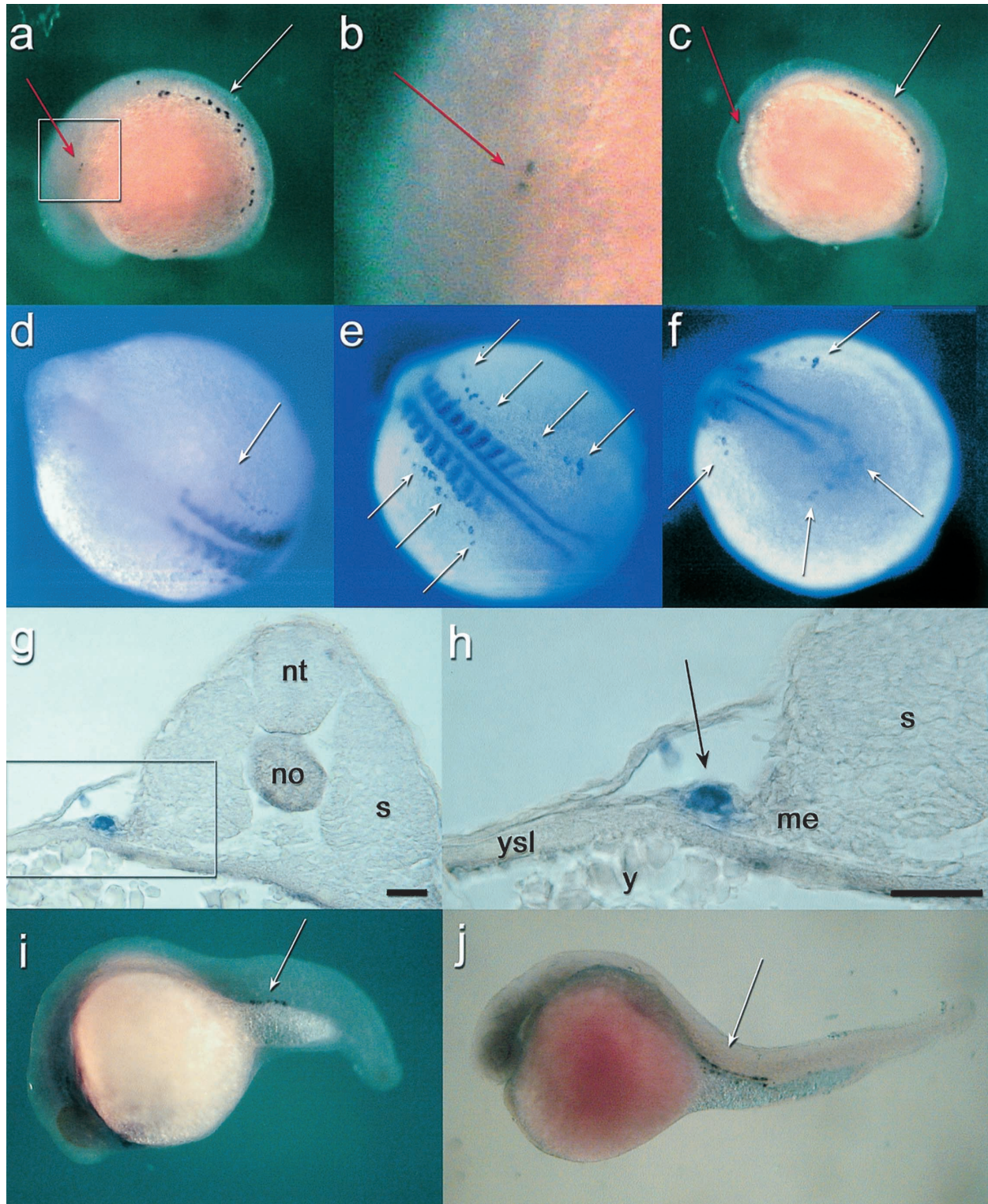


Fig. 3. Location of *vas*-positive cells after segmentation period. Arrows indicate *vas* signals. (a, b) 30 hpf (8–12 somite); *vas*-positive cells are located in both trunk and head (red arrow) region. Higher magnification of *vas* signals in head region of (a). (d) 36 hpf (18-somite). (d–f) An embryo at 12-somite stage; this sample is double-stained with *vas* and *MyoD*. *vas*-positive cells (purple dots) are distributed from 1–2 somite (d) to the end of the tail bud (f). (g, h) Transverse sections of *in situ* hybridized embryos at 30 hpf. nt, neural tube; no, notochord; s, somite; me, mesendoderm; y, yolk; ysl, yolk syncytial layer. Scale bar = 20 μm. (i) 48 hpf, and (j) 72 hpf; *vas*-positive cells are detected in the dorsal to yolk extension.

eggs and the 1-cell stage (data not shown). After the first cleavage forming the 2-cell stage, two signals resembling small dark bars were observed along the cleavage furrow at opposite sides (Fig. 1a, with these observations schematically illustrated in Fig. 4a). As the embryo developed to the 4-cell stage, a total of four signals were observed along each furrow (Figs. 1b and 4b). At the 8-cell stage, four new signals formed along the two new cleavage furrows (Figs. 1c and 4c). At the 16-cell stage, however, new *vas* signals were not observed along the 4th cleavage furrow (Figs. 1d and 4d). At the 32-cell stage, the shape of the eight *vas* signals changed from the line to the point (Fig. 1e). At the 256-cell stage, almost all the eight *vas* signals were located where left from the cleavage plane (Fig. 1f: arrow). At 512-cell (mid-blastula) stage, the eight *vas* signals were observed in each cells (Fig. 1h). The eight *vas* signals were detected during the period from the 8- to 512-cell stage (Figs. 1c-h, Fig. 4c-f). They were usually in four separate groups; each of two groups consisted of three points, and each of the others comprised only a single point (Figs. 1e-g and 4e-f). After 8 hpf (late-blastula), additional numbers of *vas*-positive cells were observed in each groups (Fig. 1h, Fig. 4g).

Almost all the *vas*-positive cells were detected in the

lower part of the blastoderm, especially in the mesendodermal region detected by *no tail* (*ntl*) as a marker (Fig. 2a-e), but a few signals were occasionally observed at the upper or middle part of the blastoderm (Fig. 2c-f: red arrows). The frequency of embryos with *vas*-positive cells out of the *ntl* region was increased with development, from 8 hpf (late blastula stage) through 10 hpf (dome stage) (Table 1).

During gastrulation, *vas*-positive cells appear to move towards the dorsal side of the embryo with the convergence movement and many of these cells were seen still to lie in the *ntl* expressing region (Figs. 2e-g and 4j). At the 70–90% epiboly stage, *vas*-positive cells located on the dorsal side were observed to leave from the marginal part and migrate to the animal side along the axis (Fig. 2f). At the 100% epiboly stage, *vas*-positive cells showed wide distribution along the paraxial mesoderm. These cells were usually observed on the trunk region of the embryonic body (Figs. 2h and 4k), however, they were sometimes observed on the anterior side, the head region of embryonic axis (Fig. 2i: red arrow).

During the segmentation period, the *vas*-positive cells still showed a long extended distribution along the axis (Fig. 3a). Almost all of the cells were observed on the posterior side from the level of the first somite (Fig. 3d-f), but some of

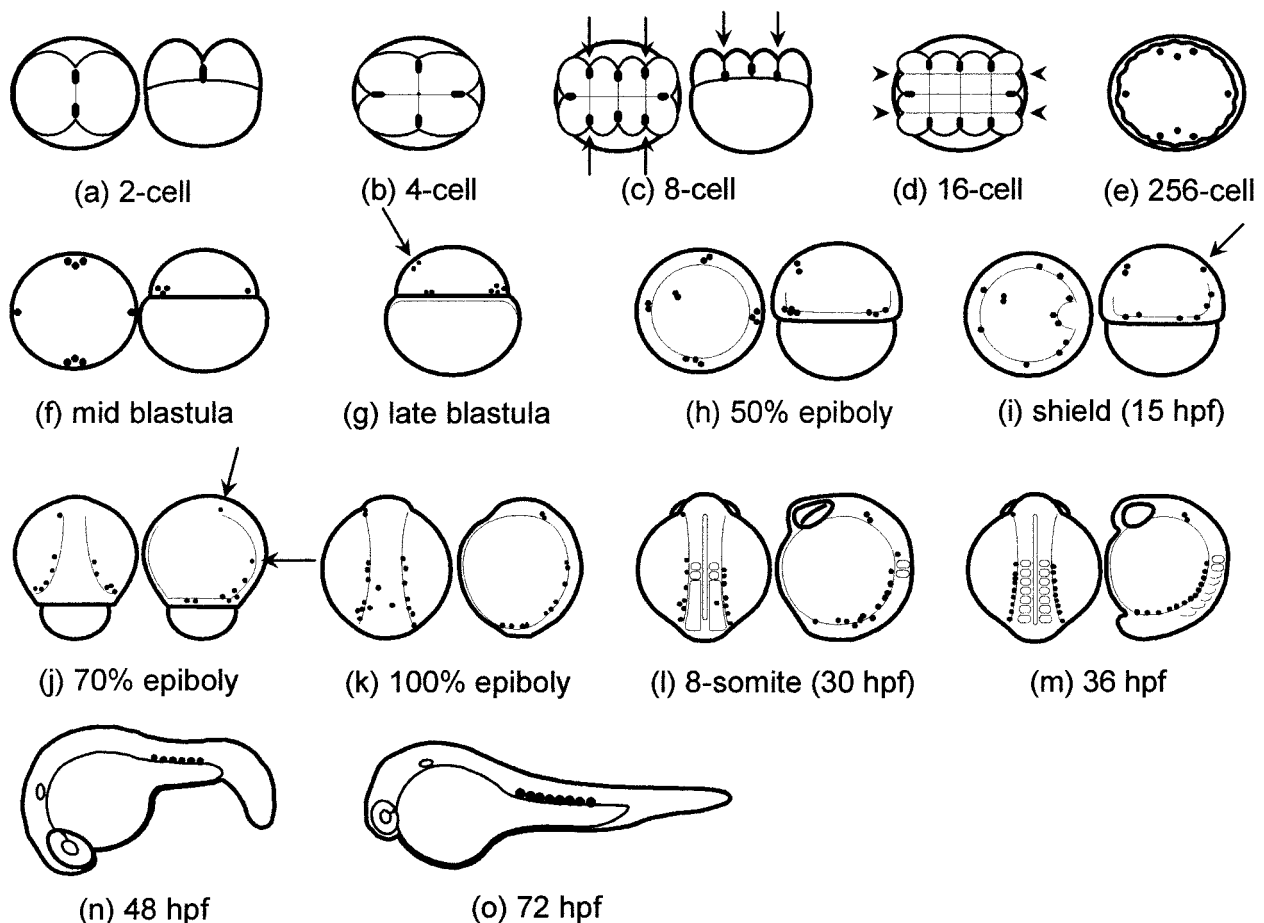


Fig. 4. Schematic illustration of *vas* signal distribution during embryogenesis in goldfish. Black points indicate *vas* signals. Arrows indicate the unique *vas* location in goldfish. *vas*-expressions are not detectable at the fourth cleavage plane (arrowheads).

the cells showed anterior localization in the head region, especially on the future otic vesicle (Fig. 3a-c: red arrow). The frequency of the embryos with *vas*-positive cells in this position at the 8- to 18-somite stage was 18% (32/175). Transverse sections of *in situ* hybridized embryos at 30 hpf showed that the *vas*-positive cells located at the lateral to the somite (Fig. 3g), and in the mesendodermal region (Fig. 3h). By 48 hpf, the *vas*-positive cells were located between the embryonic body and the yolk extension (Fig. 3i). *vas*-positive cells still showed the wide distribution along the yolk tube at 72 hpf (Fig. 3j).

DISCUSSION

vas-positive cells in goldfish

In the present study, we used *vas* RNA probes made from zebrafish cDNA for PGCs marker in goldfish. The distribution of cells in goldfish detected by zebrafish *vas* RNA probes was similar to these of PGCs reported by histological observation after 30 hpf (Kazama-Wakabayashi *et al.*, 1999). Both goldfish and zebrafish belong to the same carp family, *Cyprinidae*. Some probes, such as *gooseoid* and *no tail*, from zebrafish cDNA are also useful in the goldfish (Yamaha *et al.*, 1999). Transverse sections showed that *vas*-positive cells were located at the similar positions as morphologically identified PGCs (Kazama-Wakabayashi *et al.*, 1999). Therefore, we conclude that the *vas*-positive cells in this study were goldfish PGCs.

vas signals location at the cleavage stage

In this study, strong signals of *vas* mRNA were observed at the marginal part of the first to third cleavage furrows. In zebrafish, it has been reported that accumulations of maternal *vas* mRNA were occasionally detected at eight points of the marginal parts (Yoon *et al.*, 1997), as in the present study. In zebrafish, occasional signals at the third furrows are weaker than those at the first and second furrows, and become undetectable at later stages (Yoon *et al.*, 1997). Maternal *vas* mRNA was localized around the blastodisc at the 1-cell stage (Braat *et al.*, 1999; Howley and Ho, 2000). The correlations between the microtubule array of cleavage furrows and *vas* mRNA localization have been reported in zebrafish *nebel* mutant and normal embryos (Peleguri *et al.*, 1999). Therefore, the accumulation of *vas* mRNA might depend on the total amount and/or structure of the third cleavage furrows. In goldfish, since all the eight signals were maintained at least until the 512-cell stage and almost all signals inherited to PGCs, the amounts of *vas* mRNA might be necessary for maintenance of the accumulation and/or PGC differentiation. More detailed study is required to confirm the mechanism and role of *vas* mRNA accumulation.

vas-positive cells proliferation

In goldfish, the number of *vas*-positive cells increased at 8 hpf (late-blastula, about 4k cells). After the proliferation

of *vas*-positive cells, these cells became easily detectable. In zebrafish, *vas*-positive cells proliferate at the dome stage (late-blastula stage: Yoon *et al.*, 1997). Zygotic gene expression is thought to begin after mid-blastula transition (MBT: Newport and Kirshner, 1982ab; Kane and Kimmel, 1993). Analysis of hybrid fish with two *vas* genetic types demonstrates that zygotic *vas* expression is first detectable at the late sphere stage (Knaute *et al.*, 2000). It has been reported that MBT occurred at approximately 3 hpf in zebrafish (Kane and Kimmel, 1993) and 6 hpf in goldfish (Yamaha *et al.*, 1999). These results suggest that the proliferation of *vas*-positive cells should be influenced by zygotic factors.

vas-positive cells at 8 hpf (late-blastula) are PGCs, according to the terminology established by Nieuwkoop and Sutasurya (1979), because these cells segregate from somatic lineage and multiply *vas*-positive cells.

Appearance of *vas*-positive cells on the upper part of the blastoderm

In the present study, the frequency of embryos with *vas*-positive cells located in the outside region from the blastoderm margin increased after 8 hpf. Since the surgical elimination of the upper part of the blastoderm did not decrease the number of PGCs at gonadal anlage in goldfish (Kazama-Wakabayashi *et al.*, 1999), new *vas*-positive cells hardly emerge in the upper part of the blastoderm. In the zebrafish blastula and early gastrula, PGCs are associated with the blastoderm margin and subsequently remain in the vicinity of the germ ring (Yoon *et al.*, 1997). These differences regarding the location of *vas*-positive cells between the two species might owe to cell movement before epiboly. Goldfish blastomeres show active movement and wide mixing before gastrulation (Yamaha *et al.*, 1997, 1999). In zebrafish, cell mixing was reported only in the stages after late-blastula with epiboly movement (Kimmel and Warga, 1988). Marginal blastomeres are hardly mixed after the 64-cell stage (Wilson *et al.*, 1995). These results suggest that cell mixing in the blastoderm might mingle *vas*-positive cells to the upper part of the blastoderm in goldfish.

In teleost fish, mesoderm induction occurs in the marginal part of the blastoderm (Mizuno *et al.*, 1996). The fate of PGCs might be related to their original position at the blastoderm margin (Yoon *et al.*, 1997). But, our observation suggests that PGCs are not regulated to stay on the marginal region. Transplantation experiments have shown that presumptive PGCs transplanted to the upper part of the blastoderm migrated to the gonadal anlage and changed to germ cells (Kazama-Wakabayashi *et al.*, 1999; Yamaha *et al.*, 2001). Therefore, PGCs located outside of the marginal region may still have a potential to differentiate germ cells.

vas-positive cells location during gastrulation

In zebrafish, PGCs migrate from the blastoderm margin to dorsal side along the boundary between the trunk and head paraxial mesoderm during epiboly, and form two lat-

eral clusters at the 1st to the 3rd somite level as zebrafish (Yoon *et al.*, 1997; Weidinger *et al.*, 1999; Braat *et al.*, 1999). In goldfish, *vas*-positive cells were frequently observed in the trunk and head paraxial mesoderm and did not form clusters. It is also peculiar that the *vas* expression was very frequently observed at the head region, especially around the future otic vesicle. Histological observation also reveals PGCs at this position (Kazama-Wakabayashi *et al.*, 1999), so these *vas*-expressing cells might be PGCs. In zebrafish, PGCs located in such an ectopic position have been rarely observed (18% of embryos in goldfish versus 1.3% in zebrafish). Abnormal alignment of PGCs has been observed in *spadetail* (*spt*) mutants (Weidinger *et al.*, 1999), in which the convergence-extension movement was reduced at the early stage of gastrulation (Ho and Kane, 1990). The frequency of embryos with ectopic PGCs in zebrafish *spt* mutant (16%; Weidinger *et al.*, 1999) is similar to that in goldfish.

In conclusion, the migration route of goldfish PGCs before segmentation still remains unclear. Weidinger *et al.* (1999) proposed in zebrafish that PGCs migration are regulated by mesodermal movement during gastrulation. However, the present results about PGCs localization, such as out of the germ ring at the late-blastula stage, among the paraxial mesoderm during epiboly, and in the head during the segmentation period indicate that goldfish PGCs would prefer to migrate independently on mesodermal patterning. The detailed interaction between PGCs migration and convergence-extension movement in mesoderm during gastrulation remains to be investigated.

ACKNOWLEDGEMENT

We wish to thank Emeritus Prof. F. Yamazaki (Hokkaido University), Dr. A. Goto (Hokkaido University), Dr. G. Yoshizaki (Tokyo University of Fisheries) and Mr. T-H. Lee (Hokkaido University) for their kind guidance in this study. We also thank Mr. S. Kimura, Mrs. C. Nishida and members of Nanae Fresh Water Laboratory, Field Science Center for Northern Biosphere, Hokkaido University for their help. We also thank the members of the laboratory of Breeding Sciences, Graduate School of Fisheries Science, Hokkaido University for their useful discussion. This study was supported in part by Grants-in-Aid from the Ministry of Education, Science and Culture of Japan (No. 12460081) and the Akiyama Foundation in 1999 to E. Yamaha and that in 2000 to K. Arai.

REFERENCES

Braat AK, Zandbergen T, Van de Water S, Goos HJTH, Zivkovic D (1999) Characterization of zebrafish primordial germ cells: morphology and early distribution of *vasa* RNA. *Dev Dyn* 216: 153–167

Fujiwara Y, Komiya T, Kawabata H, Sato M, Fujimoto H, Furusawa M, Nose T (1994) Isolation of a DEAD-family protein gene that encodes a murine homolog of *Drosophila vasa* and its specific expression in germ cell lineage. *Proc Natl Acad Sci USA* 91: 12258–12262

Gilbert SF (2000) *Developmental Biology*, 6th ed. Sinauer Associates, Inc., Massachusetts, pp 589–595

Ho RK, Kane DA (1990) Cell-autonomous action of zebrafish *spt-1*

mutation in specific mesodermal precursors. *Nature* 348: 728–30

Howley C, Ho RK (2000) mRNA localization patterns in zebrafish oocytes. *Mech Dev* 92: 305–309

Ikenishi K (1998) Germ plasm in *Caenorhabditis elegans*, *Drosophila* and *Xenopus*. *Dev Growth Differ* 40: 1–10

Ikenishi K, Tanaka TS (1997) Involvement of the protein of *Xenopus vasa* homologue (*Xenopus vasa*-like gene 1, *XVLG1*) in the differentiation of primordial germ cells. *Dev Growth Differ* 39: 625–633

Jowett L, Lettice L (1994) Whole-mount *in situ* hybridizations on zebrafish probes. *TIG* 10: 73–74

Kajishima T (1960) The normal developmental stage of the goldfish, *Carassius auratus*. *Japan J Ichthyol* 8: 20–28 (in Japanese with English summary)

Kazama-Wakabayashi M, Yamaha E, Yamazaki F (1999) The elimination and duplication of lower part of blastoderm effects on the number of primordial germ cells in goldfish. *Fisheries Sci* 65: 577–582

Kane DA, Kimmel CB (1993) The zebrafish midblastula transition. *Development* 119: 447–456

Kimmel CB, Warga RM (1988) Cell lineage and developmental potential of cells in the zebrafish embryo. *TIG* 4: 68–74

Knaut H, Pelegri F, Bohmann K, Schwarz H, Nusslein-Volhard C (2000) Zebrafish *vasa* RNA but not its protein is a component of the germ plasm and segregates asymmetrically before germ-line specification. *J Cell Biol* 149: 875–888

Komiya T, Itoh K, Ikenishi K, Furusawa M (1994) Isolation and characterization of a novel gene of the DEAD box protein family which is specifically expressed in germ cells of *Xenopus laevis*. *Dev Biol* 162: 354–363

Komiya T, Tanigawa Y (1995) Cloning of a gene of the DEAD box protein family which is specifically expressed in germ cells in rats. *Biochem Biophys Res Commun* 207: 405–410

Mintz B, Russell ES (1957) Gene-induced embryological modifications of primordial germ cells in the mouse. *J Exp Zool* 134: 207–237

Mizuno T, Yamaha E, Wakahara M, Kuroiwa A, Takeda H (1996) Mesoderm induction in zebrafish. *Nature* 383: 131–132

Newport JW, Kirschner MW (1982a) A major developmental transition in early *Xenopus* embryos. I. Characterization and timing of cellular changes at the mid blastula stage. *Cell* 30: 675–686

Newport JW, Kirschner MW (1982b) A major developmental transition in early *Xenopus* embryos. II. Control of the onset of transcription. *Cell* 30: 687–696

Nieuwkoop PD, Sutasurya LA (1979) *Primordial germ cells in the chordates. embryogenesis and phylogenesis*. Cambridge Univ. Press, Cambridge pp187

Olsen LC, Aasland R, Fjose A (1997) A *vasa*-like gene in zebrafish identifies putative primordial germ cells. *Mech Dev* 66: 95–105

Pelegri F, Knaut H, Maischein M, Schulte-Merker S, Nusslein-Volhard C (1999) A mutation in the zebrafish maternal-effect gene *nebel* affects furrow formation and *vasa* RNA localization. *Curr Biol* 9: 1431–1440

Shinomiya A, Tanaka M, Kobayashi T, Nagahama Y, Hamaguchi S. (2000) The *vasa*-like gene, *olvas*, identifies the migration path of primordial germ cells during embryonic body formation stage in the medaka, *Oryzias latipes*. *Dev Growth Differ* 42: 317–326

Tsunekawa N, Naito M, Sakai Y, Nishida T, Noce T (2000) Isolation of chicken *vasa* homolog gene and tracing the origin of primordial germ cells. *Development* 127: 2741–2750

Weidinger G, Wolke U, Kopranner M, Klinger M, Raz E (1999) Identification of tissues and patterning events required for distinct steps in early migration in zebrafish primordial germ cells. *Development* 126: 5295–5307

Wilson ET, Cretekos JC, Helde AK (1995) Cell mixing during early epiboly in the zebrafish. *Dev Genet* 17: 6–15

- Yamaha E, Usui K, Onozato H, Hamada K (1986) A method for dechoriation in goldfish, *Carassius auratus*. Nippon Suisan Gakkaishi 52: 1929–1934
- Yamaha E, Mizuno T, Hasebe Y, Yamazaki F (1997) Chimeric fish produced by blastoderm exchange in goldfish, *Carassius auratus*. Fisheries Sci 63: 514–519
- Yamaha E, Mizuno T, Hasebe Y, Takeda H, Yamazaki F (1998) Dorsal specification in blastoderm at the blastula stage in the goldfish, *Carassius auratus*. Dev Growth Differ 40: 267–276
- Yamaha E, Mizuno T, Matsushita K, Hasebe Y (1999) Developmental staging in goldfish during the pre-gastrula stage. Nippon Suisan Gakkaishi 65: 709–717 (In Japanese with English summary)
- Yamaha E, Kazama-Wakabayashi M, Otani S, Fujimoto T, Arai K (2001) Germ-line chimera by lower-part blastoderm transplantation between diploid goldfish and triploid crucian carp. Genetica 111: 227–236
- Yoon C, Kawakami K, Hopkins N (1997) Zebrafish *vasa* homologue RNA is localized to the cleavage planes of 2- and 4-cell-stage embryos and is expressed in the primordial germ cells. Development 124: 3157–3165
- Yoshizaki G, Sakatani S, Tominaga H, Takeuchi T (2000) Cloning and characterization of *vasa*-like gene in rainbow trout and its expression in the germ cell lineage. Mol Reprod Dev 55: 364–371

(Received December 20, 2001 / Accepted February 20, 2002)